

# HSPD1 / HSP60 Antibody, Rabbit PAb, Antigen Affinity Purified



Sino Biological  
Biological Solution Specialist

Catalog Number: 101240-T38

## GENERAL INFORMATION

<b>Immunogen:</b>	A synthetic peptide corresponding to the C-terminus of the Human HSPD1 / HSP60
<b>Preparation</b>	Produced in rabbits immunized with a synthetic peptide corresponding to the C-terminus of the Human HSPD1 / HSP60, and purified by antigen affinity chromatography.
<b>Ig Type:</b>	Rabbit IgG
<b>Specificity:</b>	Human HSPD1 / HSP60
<b>Formulation:</b>	0.2 µm filtered solution in PBS
<b>Storage:</b>	This antibody can be stored at 2°C-8°C for one month without detectable loss of activity. Antibody products are stable for twelve months from date of receipt when stored at -20°C to -80°C. Preservative-Free. Avoid repeated freeze-thaw cycles.
<b>Alternative Names:</b>	CPN60,GROEL,HLD4,HSP-60,HSP60,HSP65,HuCHA60,SPG13

## APPLICATIONS

<b>Applications:</b>	WB,ICC/IF,IP
----------------------	--------------

## RECOMMENDED CONCENTRATION

<b>ICC/IF</b>	ICC/IF: 1:300-1:10000
<b>Western Blot</b>	WB: 1:500-1:2000
<b>Immunoprecipitation</b>	IP: 0.5-2 µL/mg of lysate

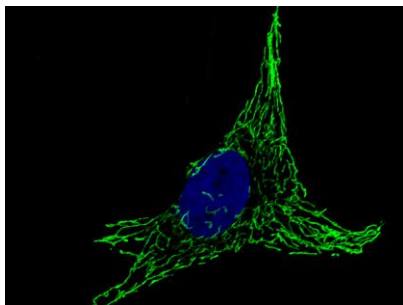
**Please Note:** Optimal concentrations/dilutions should be determined by the end user.

# HSPD1 / HSP60 Antibody, Rabbit PAb, Antigen Affinity Purified

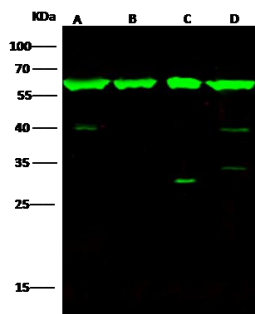


Sino Biological  
Biological Solution Specialist

Catalog Number: 101240-T38



Immunofluorescence staining of HSPD1 in HeLa cells. Cells were fixed with 4% PFA, blocked with 10% serum, and incubated with rabbit anti-human HSPD1 polyclonal antibody (1:1000) at 4°C overnight. Then cells were stained with the Alexa Fluor®488-conjugated Goat Anti-rabbit IgG secondary antibody (green) and counterstained with DAPI (blue). Positive staining was localized to Mitochondrion matrix.



Anti-HSPD1 rabbit polyclonal antibody at 1:500 dilution

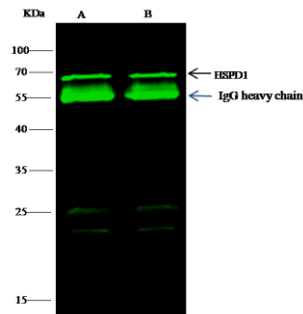
Lane A: HepG2 whole cell lysate  
Lane B: K562 whole cell lysate  
Lane C: NIH-3T3 whole cell lysate  
Lane D: A431 whole cell lysate

Lysates/proteins at 30 µg per lane.

Secondary  
Goat Anti-Rabbit IgG H&L (Dylight800) at 1/10000 dilution.

Developed using the Odyssey technique.  
Performed under reducing conditions.

Predicted band size: 60 kDa  
Observed band size: 60 kDa  
(We are unsure as to the identity of these extra bands.)



HSPD1 was immunoprecipitated using:  
Lane A: 0.5 mg HepG2 Whole Cell Lysate  
Lane B: 0.5 mg K562 Whole Cell Lysate

2 µL anti-HSPD1 rabbit polyclonal antibody and 60 µg of Immunomagnetic beads Protein G. Primary antibody:

Anti-HSPD1 rabbit polyclonal antibody, at 1:100 dilution

Secondary antibody:  
Dylight 800-labeled antibody to rabbit IgG (H+L), at 1:5000 dilution

Developed using the odyssey technique.  
Performed under reducing conditions.

Predicted band size: 60 kDa  
Observed band size: 60 kDa