

KAZALD1 Antibody, Rabbit PAb, Antigen Affinity Purified



Sino Biological
Biological Solution Specialist

Catalog Number: 101250-T32

GENERAL INFORMATION

| | |
|---------------------|---|
| Immunogen: | A synthetic peptide corresponding to the center region of the Human KAZALD1 |
| Preparation | Produced in rabbits immunized with a synthetic peptide corresponding to the center region of the Human KAZALD1, and purified by antigen affinity chromatography. |
| Ig Type: | Rabbit IgG |
| Specificity: | Human KAZALD1 |
| Formulation: | 0.2 µm filtered solution in PBS |
| Storage: | This antibody can be stored at 2°C-8°C for one month without detectable loss of activity. Antibody products are stable for twelve months from date of receipt when stored at -20°C to -80°C. Preservative-Free. Sodium azide is recommended to avoid contamination (final concentration 0.05%-0.1%). It is toxic to cells and should be disposed of properly. Avoid repeated freeze-thaw cycles. |

APPLICATIONS

| | |
|----------------------|----|
| Applications: | WB |
|----------------------|----|

RECOMMENDED CONCENTRATION

| | |
|---------------------|------------------|
| Western Blot | WB: 1:500-1:2000 |
|---------------------|------------------|

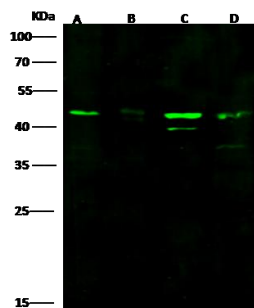
Please Note: Optimal concentrations/dilutions should be determined by the end user.

KAZALD1 Antibody, Rabbit PAb, Antigen Affinity Purified



Sino Biological
Biological Solution Specialist

Catalog Number: 101250-T32



Anti-KAZALD1 rabbit polyclonal antibody at
1:500 dilution

Lane A: HepG2 Whole Cell Lysate

Lane B: Hela Whole Cell Lysate

Lane C: A431 Whole Cell Lysate

Lane D: THP1 Whole Cell Lysate

Lysates/proteins at 30 µg per lane.

Secondary

Goat Anti-Rabbit IgG H&L (Dylight800) at
1/10000 dilution.

Developed using the Odyssey technique.

Performed under reducing conditions.

Predicted band size:33 kDa

Observed band size:45 kDa

(We are unsure as to the identity of these
extra bands.)