

Human IL-1 beta / IL1B Protein

Catalog Number: 10139-HNAE



Sino Biological
Biological Solution Specialist

General Information

Gene Name Synonym:

IL-1; IL-1 beta; IL-1B; IL1-BETA; IL1F2

Protein Construction:

A DNA sequence encoding the mature form of human IL1 β (NP_000567.1) (Ala 117-Ser 269) was expressed with a N-terminal Met.

Source: Human

Expression Host: E. coli

QC Testing

Purity: $\geq 95\%$ as determined by SDS-PAGE. $\geq 95\%$ as determined by SEC-HPLC.

Bio Activity:

1.Measured by its ability to induce Interferon gamma secretion by human natural killer lymphoma NK-92 cells. The ED50 for this effect is typically 0.2-2 ng/mL.

2.Recombinant Human IL1R1 Protein, hFc Tag (Cat. No. 10126-H02H) captured on Protein A chip, can bind Recombinant Human IL-1 beta Protein (Cat. No. 10139-HNAE) with an affinity constant of 0.942 nM as determined in an SPR assay (Biacore T200) (Routinely tested).

3.Recombinant Human IL1R2 Protein, hFc Tag (Cat. No. 10111-H02H) captured on Protein A chip, can bind Recombinant Human IL-1 beta Protein (Cat. No. 10139-HNAE) with an affinity constant of 2.008 nM as determined in an SPR assay (Biacore T200) (Routinely tested).

Endotoxin:

< 5 EU per mg of the protein as determined by the LAL method.

Predicted N terminal: Met

Molecular Mass:

The recombinant human IL1 β consisting of 154 amino acids migrates with an apparent molecular mass of 17 kDa as estimated in SDS-PAGE under reducing conditions.

Formulation:

Lyophilized from sterile PBS, pH 7.4

Normally 5% - 8% trehalose, mannitol and 0.01% Tween80 are added as protectants before lyophilization. Specific concentrations are included in the hardcopy of COA. Please contact us for any concerns or special requirements.

Usage Guide

Stability & Storage:

Samples are stable for twelve months from date of receipt at -20°C to -80°C .

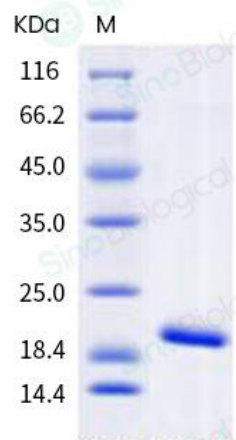
Store it under sterile conditions at -20°C to -80°C upon receiving. Recommend to aliquot the protein into smaller quantities for optimal storage.

Avoid repeated freeze-thaw cycles.

Reconstitution:

Detailed reconstitution instructions are sent along with the products.

SDS-PAGE:



Protein Description

Interleukin-1 beta (IL1 beta or IL1B) also known as catabolin, is a member of the interleukin 1 cytokine family. IL1 is a pleiotropic cytokine. It is involved in the inflammatory response, cell growth, and tissue repair in the cortex. The IL1 superfamily consists of three members, IL1A (IL1 alpha), IL1B (IL1 beta), and IL1 receptor antagonist (IL1Ra). In clinical, it has been reported that Interleukin (IL)-1 may influence Th1 / Th2 immune responsiveness and has been implicated in the establishment of a successful pregnancy. Proinflammatory interleukin (IL)-1 gene polymorphisms associated with high levels of IL-1beta activity increase the risk for hypochlorhydria and distal gastric carcinoma. IL1B polymorphisms may be involved in susceptibility to SSc. Moreover, the IL2-384-G allele may be a marker for the limited phenotype of systemic sclerosis (SSc).

References

1.Kim SH, *et al.* (2008) Association of -31TC and -511 CT polymorphisms in the interleukin 1 beta (IL1B) promoter in Korean keratoconus patients. *Mol Vis.* 14:2109-16. 2.Wang ZC, *et al.* (2002) T helper 1-type immunity to trophoblast antigens in women with a history of recurrent pregnancy loss is associated with polymorphism of the IL1B promoter region. *Genes Immun.* 3(1): 38-42. 3.Mattuzzi S, *et al.* (2007) Association of polymorphisms in the IL1B and IL2 genes with susceptibility and severity of systemic sclerosis. *J Rheumatol.* 34(5): 997-1004.

For Research Use Only. Not for use in diagnostic or therapeutic procedures.

Tel: +86-400-890-9989 (Global), +1-215-583-7898 (USA), +49(0)6196 9678656 (Europe)

Website: <http://www.sinobiological.com>