

CD171 / N-CAML1 / L1CAM Antibody (APC), Mouse MAb



Sino Biological
Biological Solution Specialist

Catalog Number: 10140-MM03-A

GENERAL INFORMATION

Immunogen:	Recombinant Human CD171 / N-CAML1 / L1CAM protein (Catalog#10140-H08H)
Reagents:	APC-conjugated Mouse monoclonal antibody
Preparation	This antibody was produced from a hybridoma resulting from the fusion of a mouse myeloma with B cells obtained from a mouse immunized with purified, recombinant Human CD171 / N-CAML1 / L1CAM (rh CD171 / N-CAML1 / L1CAM; Catalog#10140-H08H; NP_000416.1; Met1-Glu1120) and conjugated with APC under optimum conditions, the unreacted APC was removed.
Ig Type:	Mouse IgG2a
Clone ID:	03
Specificity:	Human CD171 / N-CAML1 / L1CAM
Concentration:	5 µl/Test, 0.1 mg/ml
Formulation:	PBS solution containing 0.5% BSA and 0.09% sodium azide
Storage:	This antibody can be stored at 2°C-8°C for twelve months without detectable loss of activity. Protected from prolonged exposure to light. Do not freeze ! Sodium azide is toxic to cells and should be disposed of properly. Flush with large volumes of water during disposal.
Alternative Names:	L1CAM

APPLICATIONS

Applications:	FCM
----------------------	-----

RECOMMENDED CONCENTRATION

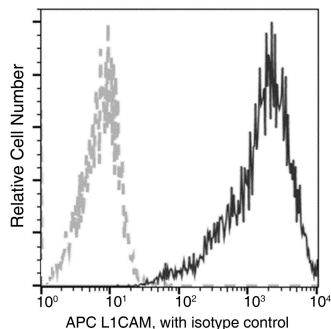
Please Note: Optimal concentrations/dilutions should be determined by the end user.

CD171 / N-CAML1 / L1CAM Antibody (APC), Mouse MAb



Sino Biological
Biological Solution Specialist

Catalog Number: 10140-MM03-A



Flow cytometric analysis of Human L1CAM expression on Hela cells. Cells were stained with APC-conjugated anti-Human L1CAM. The fluorescence histograms were derived from gated events with the forward and side light-scatter characteristics of intact cells.

Flow cytometry was performed on a BD FACSCalibur flow cytometry system. Please refer to www.sinobiological.com/Flow-Cytometry-FACS-Protocols-a-750.html for technical protocols.

For Research Use Only. Not for use in diagnostic or therapeutic procedures.

Tel: +86-400-890-9989 (Global), +1-215-583-7898 (USA), +49(0)6196 9678656 (Europe)

Website: <http://www.sinobiological.com>