

CD171 / N-CAML1 / L1CAM Antibody (PE), Rabbit MAb



Sino Biological
Biological Solution Specialist

Catalog Number: 10140-R014-P

EliteRmab® is a registered trademark of Sino Biological Inc.

GENERAL INFORMATION

Immunogen:	Recombinant Human CD171 protein (Catalog#10140-H08H)
Reagents:	PE-conjugated Rabbit monoclonal antibody
Preparation	This antibody was obtained from a rabbit immunized with purified, recombinant Human CD171 / N-CAML1 / L1CAM (rh CD171 / N-CAML1 / L1CAM; Catalog#10140-H08H; NP_000416.1; Met 1-Glu 1120) and conjugated with PE under optimum conditions, the unreacted PE was removed.
Ig Type:	Rabbit IgG
Clone ID:	014
Specificity:	Human CD171 / N-CAML1 / L1CAM
Concentration:	1 µl/Test, 0.1 mg/ml
Formulation:	PBS solution containing 0.5% BSA and 0.09% sodium azide
Storage:	This antibody can be stored at 2℃-8℃ for twelve months without detectable loss of activity. Protected from prolonged exposure to light. Do not freeze ! Sodium azide is toxic to cells and should be disposed of properly. Flush with large volumes of water during disposal.
Alternative Names:	L1CAM

APPLICATIONS

Applications:	FCM
----------------------	-----

RECOMMENDED CONCENTRATION

Please Note: Optimal concentrations/dilutions should be determined by the end user.

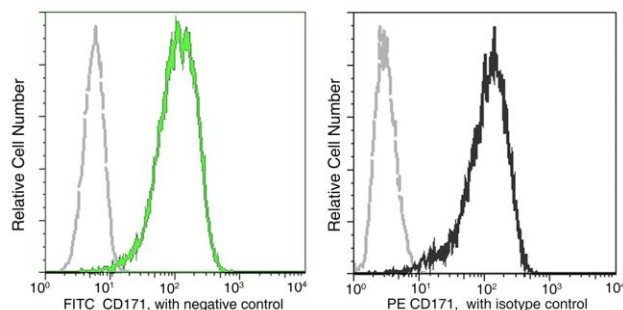
CD171 / N-CAML1 / L1CAM Antibody (PE), Rabbit MAb

Catalog Number: 10140-R014-P



Sino Biological
Biological Solution Specialist

EliteRmab® is a registered trademark of Sino Biological Inc.



Flow cytometric analysis of Human CD171 expression in HeLa cells.

Flow cytometry was performed on a BD FACSCalibur flow cytometry system. Please refer to www.sinobiological.com/Flow-Cytometry-FACS-Protocols-a-750.html for technical protocols.