

CD31 / PECAM1 Antibody (FITC), Mouse MAb



Sino Biological
Biological Solution Specialist

Catalog Number: 10148-MM02-F

GENERAL INFORMATION

Immunogen:	Recombinant Human CD31 protein (Catalog#10148-H08H)
Reagents:	FITC-conjugated Mouse monoclonal antibody
Preparation	This antibody was produced from a hybridoma resulting from the fusion of a mouse myeloma with B cells obtained from a mouse immunized with purified, recombinant Human CD31 / PECAM1 (rhCD31; Catalog#10148-H08H; Met 1-Lys 601; EAW94208.1) and conjugated with FITC under optimum conditions, the unreacted FITC was removed.
Ig Type:	Mouse IgG1
Clone ID:	02
Specificity:	Human CD31 / PECAM1
Concentration:	10 µl/Test, 0.1 mg/ml
Formulation:	PBS solution containing 0.5% BSA and 0.09% sodium azide
Storage:	This antibody can be stored at 2°C-8°C for twelve months without detectable loss of activity. Protected from prolonged exposure to light. Do not freeze ! Sodium azide is toxic to cells and should be disposed of properly. Flush with large volumes of water during disposal.
Alternative Names:	PECAM1

APPLICATIONS

Applications:	FCM
----------------------	-----

RECOMMENDED CONCENTRATION

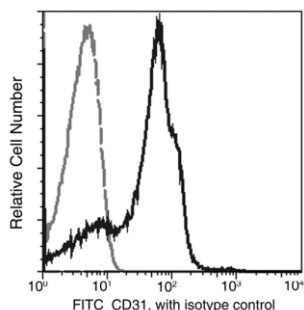
Please Note: Optimal concentrations/dilutions should be determined by the end user.

CD31 / PECAM1 Antibody (FITC), Mouse MAb



Sino Biological
Biological Solution Specialist

Catalog Number: 10148-MM02-F



Profile of peripheral blood lymphocytes and blood monocytes analyzed by flow cytometry.

Flow cytometry was performed on a BD FACSCalibur flow cytometry system.
Please refer to www.sinobiological.com/Flow-Cytometry-FACS-Protocols-a-750.html for technical protocols.