

CD147 / EMMPRIN / Basigin Antibody, Mouse MAb



Sino Biological
Biological Solution Specialist

Catalog Number: 10186-MM05

GENERAL INFORMATION

Immunogen:	Recombinant Human CD147 protein (Catalog#10186-H08H)
Preparation	This antibody was produced from a hybridoma resulting from the fusion of a mouse myeloma with B cells obtained from a mouse immunized with purified, recombinant Human CD147. (rh CD147; Catalog#10186-H08H; NP_940991.1; Met 1-His 205). The IgG fraction of the cell culture supernatant was purified by Protein A affinity chromatography.
Ig Type:	Mouse IgG2a
Clone ID:	6H11C1
Specificity:	Human CD147 / Basigin / BSG
Formulation:	0.2 µm filtered solution in PBS
Storage:	This antibody can be stored at 2°C-8°C for one month without detectable loss of activity. Antibody products are stable for twelve months from date of receipt when stored at -20°C to -80°C. Preservative-Free. Sodium azide is recommended to avoid contamination (final concentration 0.05%-0.1%). It is toxic to cells and should be disposed of properly. Avoid repeated freeze-thaw cycles.

APPLICATIONS

Applications:	ELISA,ELISA(Cap),IHC-P
----------------------	------------------------

RECOMMENDED CONCENTRATION

IHC-P	IHC-P: 1:50-1:200
ELISA	ELISA: 1:1000-1:2000 This antibody can be used at 1:1000-1:2000 with the appropriate secondary reagents to detect Human CD147.
Sandwich ELISA (Capture Ab)	ELISA(Cap): 1:250-1:2000 This antibody will detect Human CD147 / EMMPRIN / Basigin in ELISA pair set (Catalog: # SEK10186). In a sandwich ELISA, it can be used as capture antibody when paired with (Catalog: # 10186-R118).

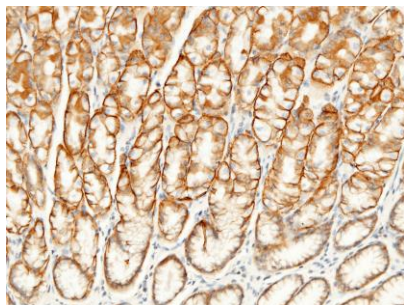
Please Note: Optimal concentrations/dilutions should be determined by the end user.

CD147 / EMMPRIN / Basigin Antibody, Mouse MAb

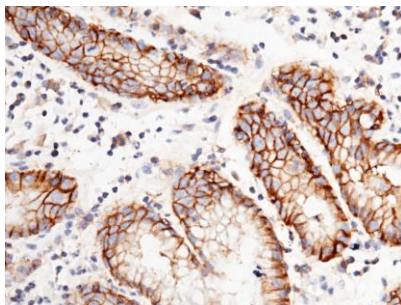


Sino Biological
Biological Solution Specialist

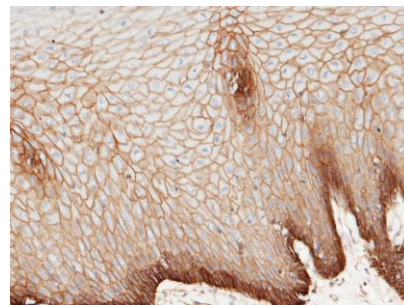
Catalog Number: 10186-MM05



Immunohistochemical staining of human CD147 in human stomach with mouse monoclonal antibody (1:60, formalin-fixed paraffin embedded sections). The image showing membrane staining of epithelium cell.



Immunohistochemical staining of human CD147 in human gastric cancer with mouse monoclonal antibody (1:100, formalin-fixed paraffin embedded sections). The image showing membrane staining of epithelium cell.



Immunohistochemical staining of human CD147 in human esophagus with mouse monoclonal antibody (1:100, formalin-fixed paraffin embedded sections). The image showing membrane staining of squamous epithelium cell.