

CD147 / EMMPRIN / Basigin Antibody (PE), Rabbit MAb



Sino Biological
Biological Solution Specialist

Catalog Number: 10186-R125-P

EliteRmab® is a registered trademark of Sino Biological Inc.

GENERAL INFORMATION

Immunogen:	Recombinant Human CD147 / EMMPRIN / Basigin protein (Catalog#10186-H08H)
Reagents:	PE-conjugated Rabbit monoclonal antibody
Preparation	This antibody was obtained from a rabbit immunized with purified, recombinant Human WFDC2 / HE4 (rh WFDC2 / HE4; Catalog#12609-H08H; NP_940991.1; Met1-His205) and conjugated with PE under optimum conditions, the unreacted PE was removed.
Ig Type:	Rabbit IgG
Clone ID:	125
Specificity:	Human CD147 / EMMPRIN / Basigin
Concentration:	5 µl/Test, 0.1 mg/ml
Formulation:	PBS solution containing 0.5% BSA and 0.1% sodium azide
Storage:	This antibody can be stored at 2℃-8℃ for twelve months without detectable loss of activity. Protected from prolonged exposure to light. Do not freeze ! Sodium azide is toxic to cells and should be disposed of properly. Flush with large volumes of water during disposal.
Alternative Names:	BSG

APPLICATIONS

Applications:	FCM
----------------------	-----

RECOMMENDED CONCENTRATION

Please Note: Optimal concentrations/dilutions should be determined by the end user.

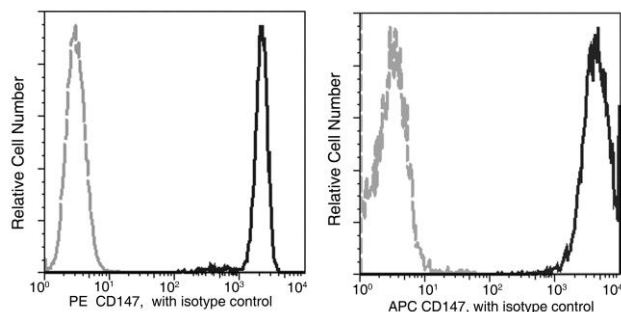
CD147 / EMMPRIN / Basigin Antibody (PE), Rabbit MAb

Catalog Number: 10186-R125-P



Sino Biological
Biological Solution Specialist

EliteRmab® is a registered trademark of Sino Biological Inc.



Analysis of anti-CD147 reactivity on HeLa cells.

Flow cytometry was performed on a BD FACSCalibur flow cytometry system.
Please refer to www.sinobiological.com/Flow-Cytometry-FACS-Protocols-a-750.html for technical protocols.