

Human FGF7 / FGF-7 / KGF Protein (His Tag)



Sino Biological
Biological Solution Specialist

Catalog Number: 10210-H07E

General Information

Gene Name Synonym:

HBGF-7; KGF

Protein Construction:

A DNA sequence encoding the human KGF (P21781) (Cys32-Thr194) was expressed with a polyhistidine tag at the N-terminus.

Source: Human

Expression Host: E. coli

QC Testing

Purity: ≥ 95 % as determined by SDS-PAGE. ≥ 95 % as determined by SEC-HPLC.

Bio-activity:

1. Measured in a cell proliferation assay using BaF3 mouse pro-B cells transfected with human FGFR2b. The ED50 for this effect is typically 3-20 ng/mL.

2. Human lung cancer organoids were cultured with FGF2(Cat#10014-HNAE), FGF4(Cat#16043-HNAE), FGF7(Cat#10210-H07E), EGF(Cat#50482-MNCH), FGF10(Cat#10573-HNAE), NOG(Cat#50688-M02H), RSPO1(Cat#11083-HNAS). (Routinely tested). Data provided by D1 Medical Technology.

3. Human lung organoids were cultured with FGF2(Cat#10014-HNAE), FGF4(Cat#16043-HNAE), FGF7(Cat#10210-H07E), EGF(Cat#50482-MNCH), FGF10(Cat#10573-HNAE), NOG(Cat#50688-M02H), RSPO1(Cat#11083-HNAS). (Routinely tested). Data provided by D1 Medical Technology.

4. Human cholangiocarcinomas organoids were cultured with FGF2(Cat#10014-HNAE), HGF(Cat#10463-HNAS), FGF7(Cat#10210-H07E), EGF(Cat#50482-MNCH), FGF10(Cat#10573-HNAE), NOG(Cat#50688-M02H), RSPO1(Cat#11083-HNAS). (Routinely tested). Data provided by D1 Medical Technology.

5. Human liver cancer organoids were cultured with FGF2(Cat#10014-HNAE), HGF(Cat#10463-HNAS), FGF7(Cat#10210-H07E), EGF(Cat#50482-MNCH), FGF10(Cat#10573-HNAE), TGFβ1(Cat#10804-HNAC), NOG(Cat#50688-M02H), RSPO1(Cat#11083-HNAS). (Routinely tested). Data provided by D1 Medical Technology.

6. Human kidney cancer organoids were cultured with FGF2(Cat#10014-HNAE), FGF7(Cat#10210-H07E), EGF(Cat#50482-MNCH), FGF10(Cat#10573-HNAE), NOG(Cat#50688-M02H), RSPO1(Cat#11083-HNAS). (Routinely tested). Data provided by D1 Medical Technology.

7. Human kidney organoids were cultured with FGF7(Cat#10210-H07E), EGF(Cat#50482-MNCH), FGF10(Cat#10573-HNAE), NOG(Cat#50688-M02H), RSPO1(Cat#11083-HNAS), HGF(Cat#10463-HNAS), FGF4(Cat#16043-HNAE). (Routinely tested). Data provided by D1 Medical Technology.

8. Human breast cancer organoids were cultured with FGF7(Cat#10210-H07E), RSPO1(Cat#11083-HNAS), IGF1(Cat#10598-HNAE), EGF(Cat#50482-MNCH), NRG1 Beta 1(Cat#11609-H01H), NOG(Cat#50688-M02H). (Routinely tested). Data provided by D1 Medical Technology.

Endotoxin:

< 0.1 EU per µg of the protein.

Stability:

Samples are stable for up to twelve months from date of receipt at -70 °C

Predicted N terminal: His

Molecular Mass:

The recombinant human KGF consists of 179 amino acids and predicts a molecular mass of 21 KDa. It migrates as an approximately 23 KDa band in SDS-PAGE under reducing conditions.

Formulation:

Lyophilized from sterile 50mM Tris, 250mM NaCl, pH7.5.

Normally 5 % - 8 % trehalose, mannitol and 0.01% Tween80 are added as protectants before lyophilization. Specific concentrations are included in the hardcopy of COA. Please contact us for any concerns or special requirements.

Usage Guide

Storage:

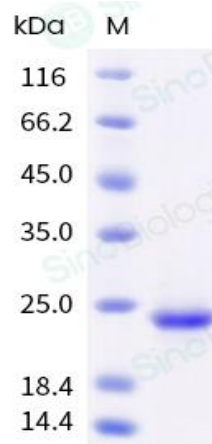
Store it under sterile conditions at -20°C to -80°C upon receiving. Recommend to aliquot the protein into smaller quantities for optimal storage.

Avoid repeated freeze-thaw cycles.

Reconstitution:

Detailed reconstitution instructions are sent along with the products.

SDS-PAGE:



Manufactured By Sino Biological Inc., FOR RESEARCH USE ONLY. NOT FOR USE IN HUMANS.

For US Customer: Fax: 267-657-0217 • Tel: 215-583-7898

Global Customer: Fax :+86-10-5862-8288 • Tel:+86-400-890-9989 • <http://www.sinobiological.com>