

SerpinD1 Antibody, Mouse MAb



Sino Biological
Biological Solution Specialist

Catalog Number: 10295-MM07

GENERAL INFORMATION	
Immunogen:	Recombinant Human SerpinD1 protein (Catalog#10295-H08H)
Preparation	This antibody was produced from a hybridoma resulting from the fusion of a mouse myeloma with B cells obtained from a mouse immunized with purified, recombinant Human SerpinD1 (rh SerpinD1; Catalog#10295-H08H; NP_000176.2; Met1-Ser499). The IgG fraction of the cell culture supernatant was purified by Protein A affinity chromatography.
Ig Type:	Mouse IgG1
Clone ID:	07
Specificity:	Human SerpinD1
	No cross-reactivity in ELISA with Human SerpinC1 Human SerpinI1 Mouse SerpinD1 Mouse SerpinF1 Mouse SerpinF2
Formulation:	0.2 µm filtered solution in PBS
Storage:	This antibody can be stored at 2°C-8°C for one month without detectable loss of activity. Antibody products are stable for twelve months from date of receipt when stored at -20°C to -80°C. Preservative-Free. Avoid repeated freeze-thaw cycles.
APPLICATIONS	
Applications:	IHC-P
RECOMMENDED CONCENTRATION	
IHC-P	IHC-P: 1:50-1:200

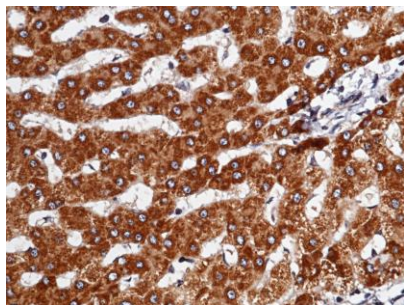
Please Note: Optimal concentrations/dilutions should be determined by the end user.

SerpinD1 Antibody, Mouse MAb

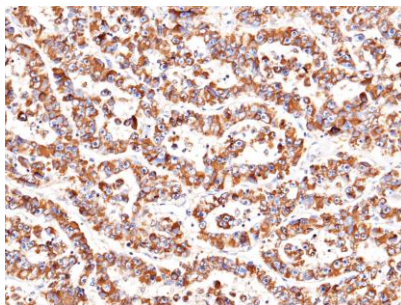


Sino Biological
Biological Solution Specialist

Catalog Number: 10295-MM07



Immunohistochemical staining of human serpinD1 in human liver with mouse monoclonal antibody (1:60, formalin-fixed paraffin embedded sections). Positive staining was localized to hepatocyte.



Immunohistochemical staining of human serpinD1 in human hepatoma with mouse monoclonal antibody (1:60, formalin-fixed paraffin embedded sections). Positive staining was localized to hepatocyte.