

SerpinF2 / AAP Antibody, Rabbit PAb, Antigen Affinity Purified



Sino Biological
Biological Solution Specialist

Catalog Number: 10297-RP02

GENERAL INFORMATION

Immunogen:	Recombinant Human SerpinF2 protein (Catalog#10297-H08H)
Preparation	Produced in rabbits immunized with purified, recombinant Human SerpinF2 (rh SerpinF2; Catalog#10297-H08H; NP_000925.2; Met 1-Lys 491). SerpinF2 specific IgG was purified by human SerpinF2 affinity chromatography.
Ig Type:	Rabbit IgG
Specificity:	Human SerpinF2 / AAP
Formulation:	0.2 µm filtered solution in PBS
Storage:	This antibody can be stored at 2°C-8°C for one month without detectable loss of activity. Antibody products are stable for twelve months from date of receipt when stored at -20°C to -80°C. Preservative-Free. Sodium azide is recommended to avoid contamination (final concentration 0.05%-0.1%). It is toxic to cells and should be disposed of properly. Avoid repeated freeze-thaw cycles.

APPLICATIONS

Applications:	WB,ELISA,IHC-P,IP
----------------------	-------------------

RECOMMENDED CONCENTRATION

IHC-P	IHC-P: 1:500-1:2000
Western Blot	WB: 1:500-1:2000
Immunoprecipitation	IP: 1-4 µL/mg of lysate
ELISA	ELISA: 1:1000-1:2000 This antibody can be used at 1:1000-1:2000 with the appropriate secondary reagents to detect Human SerpinF2.

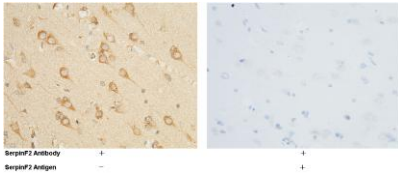
Please Note: Optimal concentrations/dilutions should be determined by the end user.

SerpinF2 / AAP Antibody, Rabbit PAb, Antigen Affinity Purified

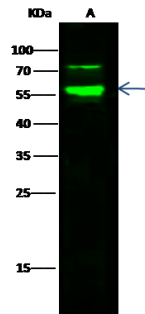


Sino Biological
Biological Solution Specialist

Catalog Number: 10297-RP02



Immunohistochemical staining of human SerpinF2 in human brain with rabbit polyclonal antibody (1:1000, formalin-fixed paraffin embedded sections). The left panel: tissue incubated with primary antibody; The right panel: tissue incubated with the mixture of primary antibody and antigen (recombinant protein).

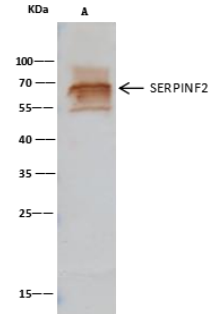


Anti-SerpinF2 rabbit polyclonal antibody at 1:500 dilution
Lane A: HepG2 Whole Cell Lysate

Lysates/proteins at 30 µg per lane.
Secondary
Goat Anti-Rabbit IgG H&L (Dylight800) at 1/10000 dilution.

Developed using the Odyssey technique.
Performed under reducing conditions.

Predicted band size: 55 kDa
Observed band size: 55 kDa
(We are unsure as to the identity of these extra bands.)



SERPINF2 was immunoprecipitated using:
Lane A: 0.5 mg HepG2 Whole Cell Lysate

2 µL anti-SERPINF2 rabbit polyclonal antibody and 15 µL of 50 % Protein G agarose.

Primary antibody:
Anti-SERPINF2 rabbit polyclonal antibody, at 1:200 dilution

Secondary antibody:
Clean-Blot® IP Detection Reagent (HRP) at 1:500 dilution

Developed using the DAB staining technique.
Performed under reducing conditions.

Predicted band size: 55 kDa
Observed band size: 66 kDa