

E-Selectin / CD62e / SELE Antibody (FITC), Mouse MAb



Sino Biological
Biological Solution Specialist

Catalog Number: 10335-MM10-F

GENERAL INFORMATION

Immunogen:	Recombinant Human E-Selectin / CD62e protein (Catalog#10335-H08H)
Reagents:	FITC-conjugated Mouse monoclonal antibody
Preparation	This antibody was produced from a hybridoma resulting from the fusion of a mouse myeloma with B cells obtained from a mouse immunized with purified, recombinant Human E-Selectin / CD62e (rh E-Selectin / CD62e; Catalog#10335-H08H; NP_000441.2; Met 1-Pro 556) and conjugated with FITC under optimum conditions, the unreacted FITC was removed.
Ig Type:	Mouse IgG2b
Clone ID:	10
Specificity:	Human E-Selectin / CD62e
Concentration:	10 µl/Test, 0.1 mg/ml
Formulation:	PBS solution containing 0.5% BSA and 0.09% sodium azide
Storage:	This antibody can be stored at 2°C-8°C for twelve months without detectable loss of activity. Protected from prolonged exposure to light. Do not freeze ! Sodium azide is toxic to cells and should be disposed of properly. Flush with large volumes of water during disposal.
Alternative Names:	SELE

APPLICATIONS

Applications:	FCM
----------------------	-----

RECOMMENDED CONCENTRATION

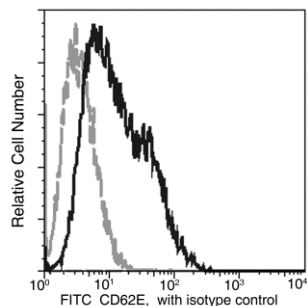
Please Note: Optimal concentrations/dilutions should be determined by the end user.

E-Selectin / CD62e / SELE Antibody (FITC), Mouse MAb



Sino Biological
Biological Solution Specialist

Catalog Number: 10335-MM10-F



Flow cytometric analysis of Human CD62E in HUVEC cells. HUVEC cells (Human umbilical vein endothelial cells) were treated with $\text{TNF-}\alpha$ (50 ng/ml, 18 hours). The cells were harvested and stained with FITC Mouse anti-Human CD62E (10335-MM10-F).

Flow cytometry was performed on a BD FACSCalibur flow cytometry system. Please refer to www.sinobiological.com/Flow-Cytometry-FACS-Protocols-a-750.html for technical protocols.