

# E-Selectin / CD62e / SELE Antibody (PE), Mouse MAb



Sino Biological  
Biological Solution Specialist

Catalog Number: 10335-MM10-P

## GENERAL INFORMATION

<b>Immunogen:</b>	Recombinant Human E-Selectin / CD62e protein (Catalog#10335-H08H)
<b>Reagents:</b>	PE-conjugated Mouse monoclonal antibody
<b>Preparation</b>	This antibody was produced from a hybridoma resulting from the fusion of a mouse myeloma with B cells obtained from a mouse immunized with purified, recombinant Human E-Selectin / CD62e (rh E-Selectin / CD62e; Catalog#10335-H08H; NP_000441.2; Met 1-Pro 556) and conjugated with PE under optimum conditions, the unreacted PE was removed.
<b>Ig Type:</b>	Mouse IgG2b
<b>Clone ID:</b>	10
<b>Specificity:</b>	Human E-Selectin / CD62e
<b>Concentration:</b>	10 µl/Test, 0.1 mg/ml
<b>Formulation:</b>	PBS solution containing 0.5% BSA and 0.09% sodium azide
<b>Storage:</b>	This antibody can be stored at 2°C-8°C for twelve months without detectable loss of activity. Protected from prolonged exposure to light. Do not freeze ! Sodium azide is toxic to cells and should be disposed of properly. Flush with large volumes of water during disposal.
<b>Alternative Names:</b>	SELE

## APPLICATIONS

<b>Applications:</b>	FCM
----------------------	-----

## RECOMMENDED CONCENTRATION

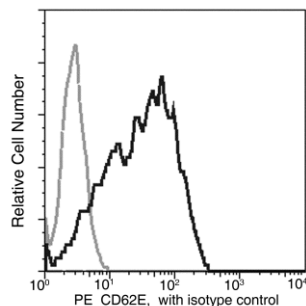
*Please Note: Optimal concentrations/dilutions should be determined by the end user.*

# E-Selectin / CD62e / SELE Antibody (PE), Mouse MAb



Sino Biological  
Biological Solution Specialist

Catalog Number: 10335-MM10-P



Flow cytometric analysis of Human CD62E in HUVEC cells. HUVEC cells (Human umbilical vein endothelial cells) were treated with TNF- $\alpha$  (50 ng/ml, 18 hours). The cells were harvested and stained with PE Mouse anti-Human CD62E (10335-MM10-P).

Flow cytometry was performed on a BD FACSCalibur flow cytometry system. Please refer to [www.sinobiological.com/Flow-Cytometry-FACS-Protocols-a-750.html](http://www.sinobiological.com/Flow-Cytometry-FACS-Protocols-a-750.html) for technical protocols.