

# ICAM-1 / CD54 Antibody (FITC), Mouse MAb



Sino Biological  
Biological Solution Specialist

Catalog Number: 10346-MM01-F

## GENERAL INFORMATION

<b>Immunogen:</b>	Recombinant Human ICAM-1 protein (Catalog#10346-H08H)
<b>Reagents:</b>	FITC-conjugated Mouse monoclonal antibody
<b>Preparation</b>	This antibody was produced from a hybridoma resulting from the fusion of a mouse myeloma with B cells obtained from a mouse immunized with purified, recombinant Human ICAM-1 / CD54 (rh ICAM-1 / CD54; Catalog#10346-H08H; NP_000192.2; Met 1-Glu 480) and conjugated with FITC under optimum conditions, the unreacted FITC was removed.
<b>Ig Type:</b>	Mouse IgG1
<b>Clone ID:</b>	01
<b>Specificity:</b>	Human ICAM-1 / CD54
<b>Concentration:</b>	10 µl/Test, 0.1 mg/ml
<b>Formulation:</b>	PBS solution containing 0.5% BSA and 0.09% sodium azide
<b>Storage:</b>	This antibody can be stored at 2°C-8°C for twelve months without detectable loss of activity. Protected from prolonged exposure to light. Do not freeze ! Sodium azide is toxic to cells and should be disposed of properly. Flush with large volumes of water during disposal.
<b>Alternative Names:</b>	ICAM1

## APPLICATIONS

<b>Applications:</b>	FCM
----------------------	-----

## RECOMMENDED CONCENTRATION

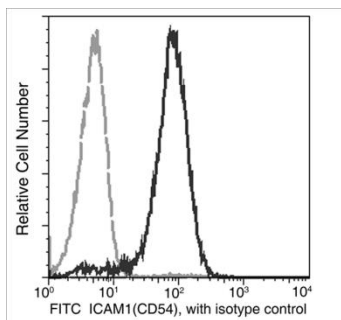
*Please Note: Optimal concentrations/dilutions should be determined by the end user.*

# ICAM-1 / CD54 Antibody (FITC), Mouse MAb



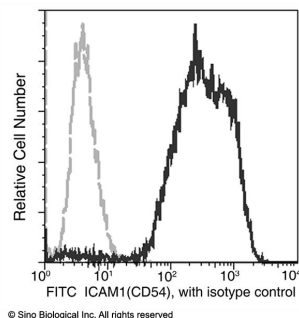
Sino Biological  
Biological Solution Specialist

Catalog Number: 10346-MM01-F



Profile of anti-ICAM1(CD54) reactivity on Daudi cells analyzed by flow cytometry.

Flow cytometry was performed on a BD FACSCalibur flow cytometry system. Please refer to [www.sinobiological.com/Flow-Cytometry-FACS-Protocols-a-750.html](http://www.sinobiological.com/Flow-Cytometry-FACS-Protocols-a-750.html) for technical protocols.



Flow cytometric analysis of Human ICAM1 (CD54) in HUVEC cells. HUVEC cells (Human umbilical vein endothelial cells) were treated with TNF- $\alpha$  (50 ng/ml, 18 hours). The cells were harvested and stained with FITC Mouse anti-Human ICAM1 (10346-MM01).

Flow cytometry was performed on a BD FACSCalibur flow cytometry system. Please refer to [www.sinobiological.com/Flow-Cytometry-FACS-Protocols-a-750.html](http://www.sinobiological.com/Flow-Cytometry-FACS-Protocols-a-750.html) for technical protocols.

**For Research Use Only. Not for use in diagnostic or therapeutic procedures.**

**Tel: +86-400-890-9989 (Global), +1-215-583-7898 (USA), +49(0)6196 9678656 (Europe)**

**Website: <http://www.sinobiological.com>**