

# Human IL-15 / IL15 / Interleukin 15 Protein (His Tag)

Catalog Number: 10360-H07E



Sino Biological  
Biological Solution Specialist

## General Information

### Gene Name Synonym:

IL-15; Interleukin 15

### Protein Construction:

A DNA sequence encoding the human IL15 (NP\_000576.1) (Asn49-Ser162) was expressed with a polyhistidine tag at the N-terminus.

**Source:** Human

**Expression Host:** E. coli

## QC Testing

**Purity:** > 95 % as determined by SDS-PAGE

### Bio Activity:

**Measured in a cell proliferation assay using MO7e human megakaryocytic leukemic cells. The ED50 for this effect is typically 5-50 ng/mL.**

### Endotoxin:

< 1.0 EU per µg protein as determined by the LAL method.

### Stability:

Samples are stable for up to twelve months from date of receipt at -70 °C

**Predicted N terminal:** Met

### Molecular Mass:

The recombinant human IL15 consists of 130 amino acids and predicts a molecular mass of 14.9 KDa. It migrates as an approximately 15 KDa band in SDS-PAGE under reducing conditions.

### Formulation:

Lyophilized from sterile PBS, pH 7.4.

Normally 5 % - 8 % trehalose, mannitol and 0.01% Tween80 are added as protectants before lyophilization. Specific concentrations are included in the hardcopy of COA. Please contact us for any concerns or special requirements.

## Usage Guide

### Storage:

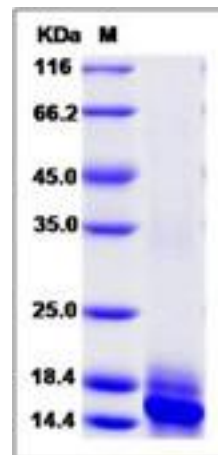
Store it under sterile conditions at -20°C to -80°C upon receiving. Recommend to aliquot the protein into smaller quantities for optimal storage.

**Avoid repeated freeze-thaw cycles.**

### Reconstitution:

Detailed reconstitution instructions are sent along with the products.

## SDS-PAGE:



## Protein Description

The protein encoded by IL15 gene is a cytokine that regulates T and natural killer cell activation and proliferation. This cytokine and interleukine 2 share many biological activities. They are found to bind common hematopoietin receptor subunits, and may compete for the same receptor, and thus negatively regulate each other's activity. The number of CD8+ memory cells is shown to be controlled by a balance between this cytokine and IL2. This cytokine induces the activation of JAK kinases, as well as the phosphorylation and activation of transcription activators STAT3, STAT5, and STAT6. Studies of the mouse counterpart suggested that this cytokine may increase the expression of apoptosis inhibitor BCL2L1/BCL-x(L), possibly through the transcription activation activity of STAT6, and thus prevent apoptosis. Alternatively spliced transcript variants of this gene have been reported.

## References

3.Mongini PKA, Gupta R, Boyle E, *et al.* TLR-9 and IL-15 synergy promotes the in vitro clonal expansion of chronic lymphocytic leukemia B cells. Journal of immunology (Baltimore, Md?: 1950). 2015;195(3):901-923.

**Manufactured By Sino Biological Inc., FOR RESEARCH USE ONLY. NOT FOR USE IN HUMANS.**

**For US Customer:** Fax: 267-657-0217 • Tel: 215-583-7898

**Global Customer:** Fax :+86-10-5862-8288 • Tel:+86-400-890-9989 • <http://www.sinobiological.com>