

BMP-2 Antibody, Mouse MAb



Sino Biological
Biological Solution Specialist

Catalog Number: 10426-MM22

GENERAL INFORMATION	
Immunogen:	Recombinant Human / Mouse / Rat / Rhesus / Canine BMP-2 protein (Catalog#10426-HNAE)
Preparation	This antibody was produced from a hybridoma resulting from the fusion of a mouse myeloma with B cells obtained from a mouse immunized with purified, recombinant Human / Mouse / Rat / Rhesus / Canine BMP-2 (rh BMP-2; Catalog#10426-HNAE; NP_001191.1; Gln283-Arg396). The IgG fraction of the cell culture supernatant was purified by Protein A affinity chromatography.
Ig Type:	Mouse IgG1
Clone ID:	22
Specificity:	Human BMP-2
Formulation:	0.2 µm filtered solution in PBS
Storage:	This antibody can be stored at 2°C-8°C for one month without detectable loss of activity. Antibody products are stable for twelve months from date of receipt when stored at -20°C to -80°C. Preservative-Free. Avoid repeated freeze-thaw cycles.
Alternative Names:	BDA2,BDA2A,BMP-2,BMP2A
APPLICATIONS	
Applications:	FCM,ICC/IF
RECOMMENDED CONCENTRATION	
ICC/IF	ICC/IF: 1:20-1:100
Flow Cytometry	FCM: 1:25-1:100

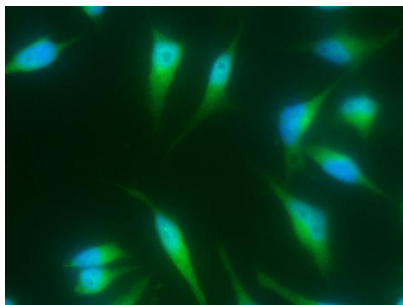
Please Note: Optimal concentrations/dilutions should be determined by the end user.

BMP-2 Antibody, Mouse MAb

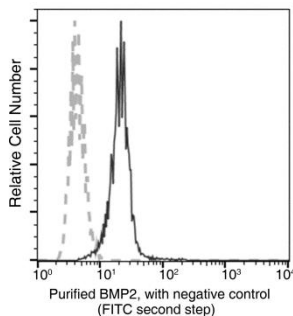


Sino Biological
Biological Solution Specialist

Catalog Number: 10426-MM22



Immunofluorescence staining of Human BMP2 in Hela cells. Cells were fixed with 4% PFA, permeabilized with 1% Triton X-100 in PBS, blocked with 10% serum, and incubated with Mouse anti-Human BMP2 monoclonal antibody (1:60) at 37°C 1 hour. Then cells were stained with the Alexa Fluor® 488-conjugated Goat Anti-mouse IgG secondary antibody (green) and counterstained with DAPI (blue). Positive staining was localized to cytoplasm.



Flow cytometric analysis of Human BMP2 expression on Hela cells. The cells were treated according to manufacturer's manual (BD Pharmingen™ Cat. No. 554714), stained with purified anti-Human BMP2, then a FITC-conjugated second step antibody. The fluorescence histograms were derived from gated events with the forward and side light-scatter characteristics of intact cells.

Flow cytometry was performed on a BD FACSCalibur flow cytometry system. Please refer to www.sinobiological.com/Flow-Cytometry-FACS-Protocols-a-750.html for technical protocols.