

TROP2 / TACSTD2 Antibody, Mouse MAb



Sino Biological
Biological Solution Specialist

Catalog Number: 10428-MM01

GENERAL INFORMATION	
Immunogen:	Recombinant Human TROP2 protein (Catalog#10428-H08H)
Preparation	This antibody was produced from a hybridoma resulting from the fusion of a mouse myeloma with B cells obtained from a mouse immunized with purified, recombinant Human TROP2 extracellular domain (rh TROP2; Catalog#10428-H08H; NP_002344.2; Met 1-Thr 274). The IgG fraction of the cell culture supernatant was purified by Protein A affinity chromatography.
Ig Type:	Mouse IgG1
Clone ID:	01
Specificity:	Human TROP2 / TACSTD2
	Has cross-reactivity in ELISA with Human TROP2 / TACSTD2 Protein (Cat# 10428-H08H) Human TROP2 / TACSTD2 Protein (Cat# HPLC-10428-H08H) Rhesus / Cynomolgus TROP2 Protein (Cat# 90893-C08H) No cross-reactivity in ELISA with Human BCAM / CD239 Human VCAM1 / CD106 Human ICAM1 / CD54 Human CD146 / MCAM / MUC18 Human CD171 / NCAM1 / L1CAM Human Cadherin-1 / E-cadherin / CDH1 / CD324 Mouse TROP2 / TACSTD2 Protein (Cat# 50922-M08H) Rat TROP-2 / TACSTD2 Protein (Cat# 86246-R08H)
Species reactivity	Reacts with: Human, Rhesus/Cynomolgus Not React with: Mouse, Rat
Formulation:	0.2 µm filtered solution in PBS
Storage:	This antibody can be stored at 2°C-8°C for one month without detectable loss of activity. Antibody products are stable for twelve months from date of receipt when stored at -20°C to -80°C. Preservative-Free. Sodium azide is recommended to avoid contamination (final concentration 0.05%-0.1%). It is toxic to cells and should be disposed of properly. Avoid repeated freeze-thaw cycles.
APPLICATIONS	
Applications:	WB, ELISA, ELISA(Det), IHC-P, FCM, ICC/IF
RECOMMENDED CONCENTRATION	
Western Blot	WB: 1:500-1:2000
IHC-P	IHC-P: 1:100-1:500
ICC/IF	ICC/IF: 1:20-1:100
Flow Cytometry	FCM: 1:25-1:100
ELISA	ELISA: 1:1000-1:2000 This antibody can be used at 1:1000-1:2000 with the appropriate secondary reagents to detect Human TROP2.
Sandwich ELISA (Detection Ab)	ELISA(Det): 1:1000-1:10000 This antibody will detect Human TROP-2 / TACSTD2 / TACD2 in ELISA pair set (Catalog: # SEK10428). In a sandwich ELISA, it can be used as detection antibody when paired with (Catalog: # 10428-MM02).

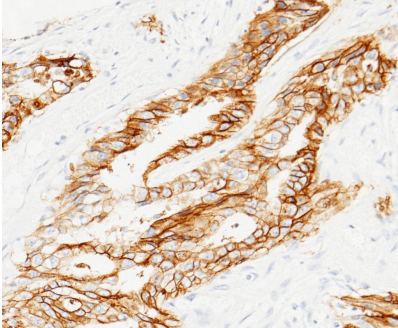
Please Note: Optimal concentrations/dilutions should be determined by the end user.

TROP2 / TACSTD2 Antibody, Mouse MAb

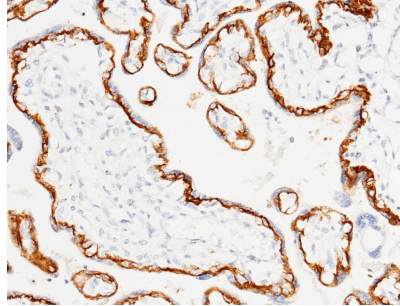


Sino Biological
Biological Solution Specialist

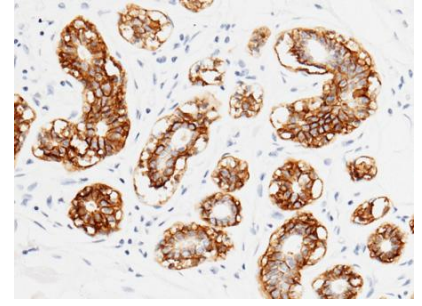
Catalog Number: 10428-MM01



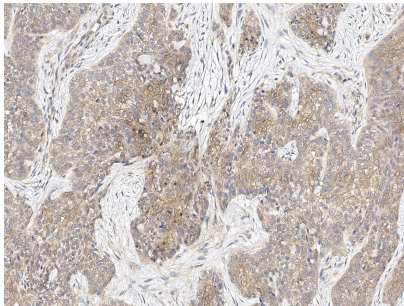
Immunohistochemical staining of human TROP2 in human rectal cancer with mouse monoclonal antibody (1:200, formalin-fixed paraffin embedded sections).



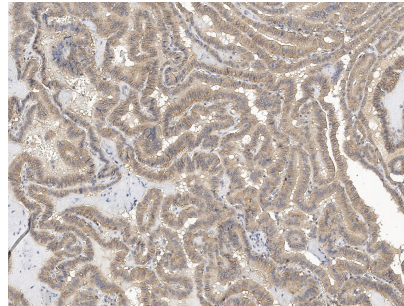
Immunohistochemical staining of human TROP2 in human placenta with mouse monoclonal antibody (1:60, formalin-fixed paraffin embedded sections). Positive staining was localized to membrane of cytotrophoblast.



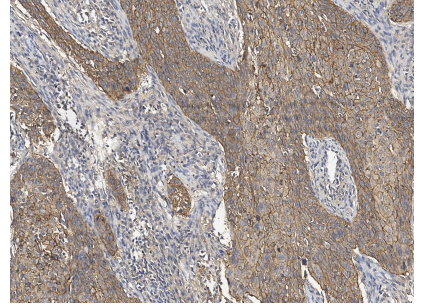
Immunohistochemical staining of human TROP2 in human mammary gland with mouse monoclonal antibody (1:200, formalin-fixed paraffin embedded sections). Positive staining was localized to membrane of alveolus epithelium.



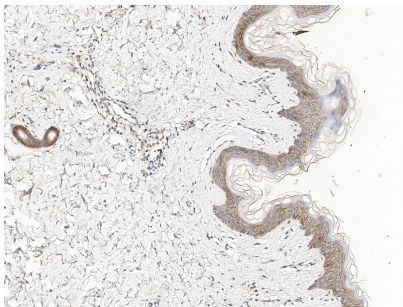
Immunohistochemical staining of human TROP2 in human skin cancer with rabbit polyclonal antibody at 1:100 dilution, formalin-fixed paraffin embedded sections.



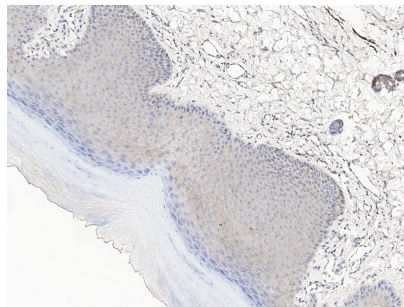
Immunohistochemical staining of human TROP2 in human thyroid cancer with rabbit polyclonal antibody at 1:100 dilution, formalin-fixed paraffin embedded sections.



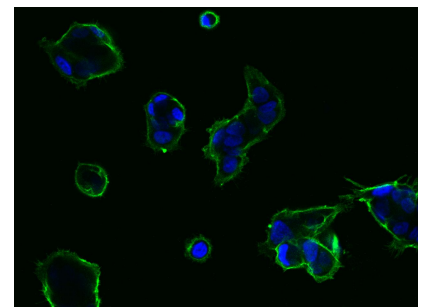
Immunohistochemical staining of human TROP2 in human hystero carcinoma with rabbit polyclonal antibody at 1:100 dilution, formalin-fixed paraffin embedded sections.



Immunohistochemical staining of human TROP2 in human skin with rabbit polyclonal antibody at 1:100 dilution, formalin-fixed paraffin embedded sections.



Immunohistochemical staining of monkey TROP2 in monkey Palm skin with rabbit polyclonal antibody at 1:100 dilution, formalin-fixed paraffin embedded sections.



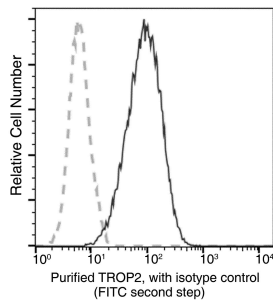
Immunofluorescence staining of TROP-2 in NCI-N87 cells. Cells were fixed with 4% PFA, blocked with 10% serum, and incubated with mouse anti-Human TROP-2 monoclonal antibody (dilution ratio 1:60) at 4°C overnight. Then cells were stained with the Alexa Fluor®488-conjugated Goat Anti-mouse IgG secondary antibody (green) and counterstained with DAPI (blue). Positive staining was localized to Cell membrane.

TROP2 / TACSTD2 Antibody, Mouse MAb

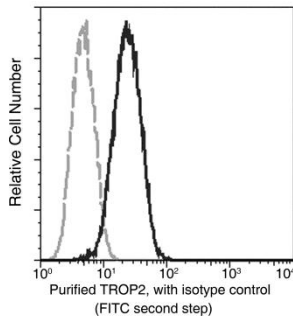


Sino Biological
Biological Solution Specialist

Catalog Number: 10428-MM01

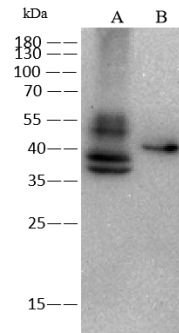


Flow cytometric analysis of human TROP2 expression on NCI-N87 cells. Cells were stained with purified anti-Human TROP2, then a FITC-conjugated second step antibody. The histogram were derived from gated events with the forward and side light-scatter characteristics of intact cells.



Flow cytometric analysis of human TROP2 expression on MCF-7 cells. Cells were stained with purified anti-Human TROP2, then a FITC-conjugated second step antibody. The histogram were derived from gated events with the forward and side light-scatter characteristics of intact cells.

Flow cytometry was performed on a BD FACSCalibur flow cytometry system. Please refer to www.sinobiological.com/Flow-Cytometry-FACS-Protocols-a-750.html for technical protocols.



Anti-TROP2 mouse monoclonal antibody at 1:500 dilution

Lane A: MCF-7 Whole Cell Lysate

Lane B: NCI-N87 Whole Cell Lysate

Lysates/proteins at 30 µg per lane.

Secondary

Goat Anti-Mouse IgG (H+L)/HRP at 1/10000 dilution.

Developed using the ECL technique.
Performed under reducing conditions.

Predicted band size: 36 kDa

Observed band size: 36-40 kDa