

# TROP2 / TACSTD2 Antibody, Mouse MAb



Sino Biological  
Biological Solution Specialist

Catalog Number: 10428-MM02

GENERAL INFORMATION	
Immunogen:	Recombinant Human TROP2 protein (Catalog#10428-H08H)
Preparation	This antibody was produced from a hybridoma resulting from the fusion of a mouse myeloma with B cells obtained from a mouse immunized with purified, recombinant Human TROP2 extracellular domain (rh TROP2; Catalog#10428-H08H; NP_002344.2; Met 1-Thr 274). The IgG fraction of the cell culture supernatant was purified by Protein A affinity chromatography.
Ig Type:	Mouse IgG1
Clone ID:	8C6C1D7
Specificity:	Human TROP2 / TACSTD2
	<b>Has cross-reactivity in ELISA with</b> Human TROP2 / TACSTD2 Protein (Cat# 10428-H08H) Human TROP2 / TACSTD2 Protein (Cat# HPLC-10428-H08H) Rhesus / Cynomolgus TROP2 Protein (Cat# 90893-C08H)  <b>No cross-reactivity in ELISA with</b> Human BCAM / CD239 Human VCAM1 / CD106 Human ICAM1 / CD54 Human CD146 / MCAM / MUC18 Human CD171 / NCAM1 / L1CAM Human Cadherin-1 / E-cadherin / CDH1 / CD324 Mouse TROP2 / TACSTD2 Protein (Cat# 50922-M08H) Rat TROP-2 / TACSTD2 Protein (Cat# 86246-R08H)
Species reactivity	Reacts with: Human, Rhesus/Cynomolgus Not React with: Mouse, Rat
Formulation:	0.2 µm filtered solution in PBS
Storage:	This antibody can be stored at 2°C-8°C for one month without detectable loss of activity. Antibody products are stable for twelve months from date of receipt when stored at -20°C to -80°C. Preservative-Free. Avoid repeated freeze-thaw cycles.
Alternative Names:	EGP-1,EGP1,GA733-1,GA7331,GP50,M1S1,TACD2,TROP-2,TROP2
APPLICATIONS	
Applications:	ELISA(Cap),IHC-P,ICC/IF
RECOMMENDED CONCENTRATION	
IHC-P	IHC-P: 1:100-1:500
ICC/IF	ICC/IF: 1:20-1:100
Sandwich ELISA (Capture Ab)	ELISA(Cap): 1:250-1:2000 This antibody will detect Human TROP-2 / TACSTD2 / TACD2 in ELISA pair set (Catalog: # SEK10428). In a sandwich ELISA, it can be used as capture antibody when paired with (Catalog: # 10428-MM01).

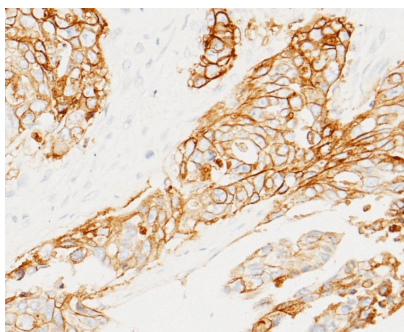
**Please Note: Optimal concentrations/dilutions should be determined by the end user.**

# TROP2 / TACSTD2 Antibody, Mouse MAb

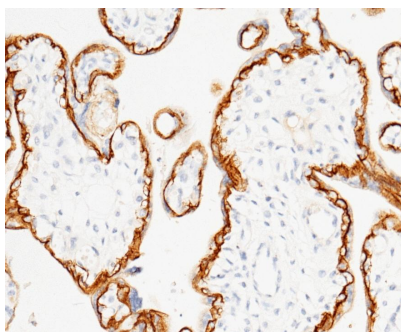


Sino Biological  
Biological Solution Specialist

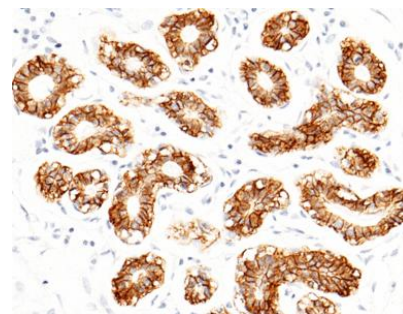
Catalog Number: 10428-MM02



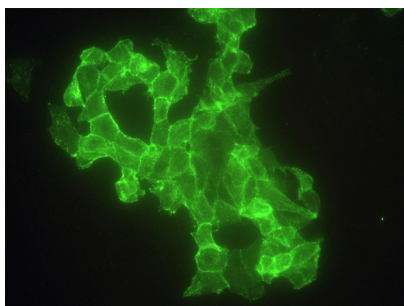
Immunohistochemical staining of human TROP2 in human rectal cancer with mouse monoclonal antibody (1:200, formalin-fixed paraffin embedded sections).



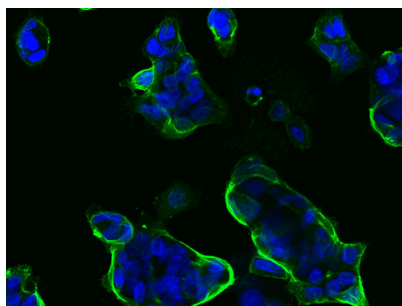
Immunohistochemical staining of human TROP2 in human placenta with mouse monoclonal antibody (1:60, formalin-fixed paraffin embedded sections). Positive staining was localized to membrane of cytotrophoblast.



Immunohistochemical staining of human TROP2 in human mammary gland with mouse monoclonal antibody (1:200, formalin-fixed paraffin embedded sections). Positive staining was localized to membrane of alveolus epithelium.



Immunofluorescence staining of human TROP2 in MCF-7 cells with mouse monoclonal antibody (1:60). The image showing membrane staining of MCF-7 cells.



Immunofluorescence staining of TROP-2 in NCI-N87 cells. Cells were fixed with 4% PFA, blocked with 10% serum, and incubated with mouse anti-Human TROP-2 monoclonal antibody (dilution ratio 1:60) at 4°C overnight. Then cells were stained with the Alexa Fluor®488-conjugated Goat Anti-mouse IgG secondary antibody (green) and counterstained with DAPI (blue). Positive staining was localized to Cell membrane.