

TROP2 / TACSTD2 Antibody, Rabbit MAb



Sino Biological
Biological Solution Specialist

Catalog Number: 10428-R001

EliteRmab® is a registered trademark of Sino Biological Inc.

GENERAL INFORMATION	
Immunogen:	Recombinant Human TROP2 / TACSTD2 protein (Catalog#10428-H08H)
Preparation	This antibody was obtained from a rabbit immunized with purified, recombinant Human TROP2 / TACSTD2 (rh TROP2 / TACSTD2; Catalog#10428-H08H; NP_002344.2; Met 1-Thr 274).
Ig Type:	Rabbit IgG
Clone ID:	001
Specificity:	Human TROP2 / TACSTD2
	<p>Has cross-reactivity in ELISA with Human E-cad Human CD146 Human CD171 Human BCAM Human ICAM1 Human TROP2 / TACSTD2 Protein (Cat# 10428-H08H) Human TROP2 / TACSTD2 Protein (Cat# HPLC-10428-H08H) Rhesus / Cynomolgus TROP2 Protein (Cat# 90893-C08H)</p> <p>No cross-reactivity in ELISA with Human VCAM1 Mouse TROP2 / TACSTD2 Protein (Cat# 50922-M08H) Rat TROP-2 / TACSTD2 Protein (Cat# 86246-R08H)</p>
Species reactivity	Reacts with: Human, Rhesus/Cynomolgus Not React with: Mouse, Rat
Formulation:	0.2 µm filtered solution in PBS
Storage:	This antibody can be stored at 2°C-8°C for one month without detectable loss of activity. Antibody products are stable for twelve months from date of receipt when stored at -20°C to -80°C. Preservative-Free. Avoid repeated freeze-thaw cycles.
Alternative Names:	EGP-1,EGP1,GA733-1,GA7331,GP50,M1S1,TACD2,TROP-2,TROP2
APPLICATIONS	
Applications:	ELISA,FCM,ICC/IF
RECOMMENDED CONCENTRATION	
ICC/IF	ICC/IF: 1:20-1:100
Flow Cytometry	FCM: 1:25-1:100
ELISA	ELISA: 1:5000-1:10000 This antibody can be used at 1:5000-1:10000 with the appropriate secondary reagents to detect Human TROP2.

Please Note: Optimal concentrations/dilutions should be determined by the end user.

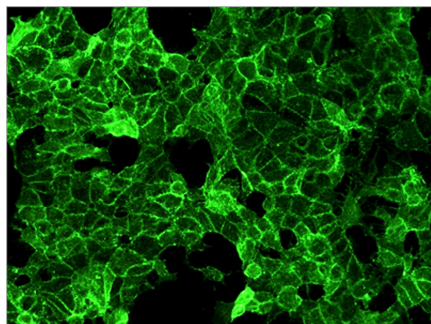
TROP2 / TACSTD2 Antibody, Rabbit MAb

Catalog Number: 10428-R001

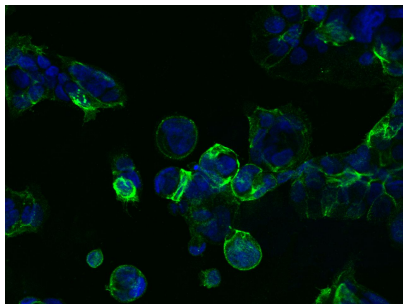


Sino Biological
Biological Solution Specialist

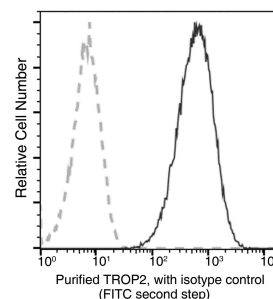
EliteRmab® is a registered trademark of Sino Biological Inc.



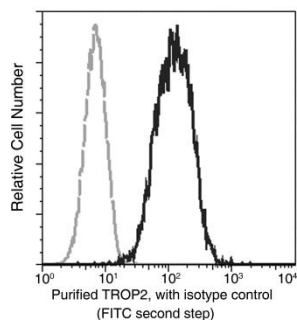
Immunofluorescence staining of human TROP2 in MCF-7 cells with rabbit monoclonal antibody (1:200). The image showing membrane staining of MCF-7 cells.



Immunofluorescence staining of TROP-2 in NCI-N87 cells. Cells were fixed with 4% PFA, blocked with 10% serum, and incubated with rabbit anti-Human TROP-2 monoclonal antibody (dilution ratio 1:60) at 4°C overnight. Then cells were stained with the Alexa Fluor®488-conjugated Goat Anti-rabbit IgG secondary antibody (green) and counterstained with DAPI (blue). Positive staining was localized to Cell membrane.



Flow cytometric analysis of human TROP2 expression on NCI-N87 cells. Cells were stained with purified anti-Human TROP2, then a FITC-conjugated second step antibody. The histogram were derived from gated events with the forward and side light-scatter characteristics of intact cells.



Flow cytometric analysis of human TROP2 expression on MCF-7 cells. Cells were stained with purified anti-Human TROP2, then a FITC-conjugated second step antibody. The histogram were derived from gated events with the forward and side light-scatter characteristics of intact cells.

Flow cytometry was performed on a BD FACSCalibur flow cytometry system. Please refer to www.sinobiological.com/Flow-Cytometry-FACS-Protocols-a-750.html for technical protocols.