

Human IGFBP3 / IBP3 Protein (His Tag)

Catalog Number: 10430-H07H



Sino Biological
Biological Solution Specialist

General Information

Gene Name Synonym:

BP-53; IBP3; IGFBP3

Protein Construction:

A DNA sequence encoding the mature form of human IGFBP3 (NP_000589.2) (Gly28-Lys291) was fused with a polyhistidine tag at the N-terminus.

Source: Human

Expression Host: HEK293 Cells

QC Testing

Purity: > 85 % as determined by SDS-PAGE

Bio Activity:

1. Measured by its binding ability in a functional ELISA. Immobilized human IGF2 (Cat:13032-H24E) at 10 µg/mL (100 µl/well) can bind biotinylated Human His-IGFBP3, The EC₅₀ of biotinylated Human His-IGFBP3 is 18 ng/mL. 2. Measured by its binding ability in a functional ELISA. Immobilized human IGF1 (Cat:10598-H24E) at 10 µg/mL (100 µl/well) can bind biotinylated Human His-IGFBP3, The EC₅₀ of biotinylated Human His-IGFBP3 is 24 ng/mL. 3. Measured by its ability to inhibit the biological activity of IGF1 or IGFII on MCF7 human breast adenocarcinoma cells (Karey, K.P. et al. (1988) Cancer Research 48:4083.). The ED₅₀ for this effect is typically 0.05-0.2 µg/mL in the presence of 14 ng/mL human IGFII.

Endotoxin:

< 1.0 EU per µg of the protein as determined by the LAL method

Predicted N terminal: His

Molecular Mass:

The secreted recombinant human IGFBP3 comprises 280 amino acids with a predicted molecular mass of 31 kDa. As a result of glycosylation, the apparent molecular mass of rhIGFBP3 is approximately 40-45 kDa in SDS-PAGE under reducing conditions.

Formulation:

Lyophilized from sterile PBS, pH 7.4

Normally 5 % - 8 % trehalose, mannitol and 0.01% Tween80 are added as protectants before lyophilization. Specific concentrations are included in the hardcopy of COA. Please contact us for any concerns or special requirements.

Usage Guide

Stability & Storage:

Samples are stable for twelve months from date of receipt at -20°C to -80°C.

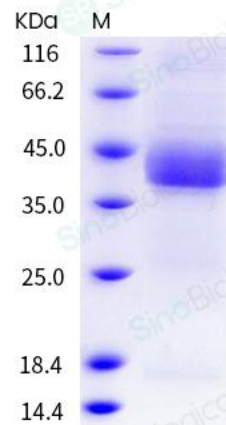
Store it under sterile conditions at -20°C to -80°C upon receiving. Recommend to aliquot the protein into smaller quantities for optimal storage.

Avoid repeated freeze-thaw cycles.

Reconstitution:

Detailed reconstitution instructions are sent along with the products.

SDS-PAGE:



Protein Description

The Insulin-like Growth Factor (IGF) signaling system plays a central role in cellular growth, differentiation, and proliferation. IGFBP3 is the most abundant IGF binding protein in human serum and is a growth inhibitory, apoptosis-inducing molecule, capable of acting via IGF-dependent and IGF-independent mechanisms. It appears to function both by cell cycle blockade and the induction of apoptosis. IGFBP3 can be transported to the nucleus by an importin beta mediated mechanism, where it has been shown to interact with the retinoid X receptor alpha and possibly other nuclear elements. IGFBP3 antiproliferative signaling appears to require an active transforming growth factor-beta (TGF-beta) signaling pathway, and IGFBP3 stimulates phosphorylation of the TGF-beta signaling intermediates Smad2 and Smad3. IGFBP3 has IGF-independent roles in inhibiting cell proliferation in cancer cell lines. Nuclear transcription factor, retinoid X receptor (RXR)-alpha, and IGFBP3 functionally interact to reduce prostate tumor growth and prostate-specific antigen in vivo. Several clinical studies have proposed that individuals with IGFBP3 levels in the upper range of normal may have a decreased risk for certain common cancers. This includes evidence of a protective effect against breast cancer, prostate cancer, colorectal cancer, and lung cancer. Moreover, IGFBP3 inhibits insulin-stimulated glucose uptake into adipocytes independent of IGF.

References

1. Baxter RC. (2001) Signalling pathways involved in antiproliferative effects of IGFBP-3: a review. Mol Pathol. 54(3): 145-8.
2. Butt AJ, et al. (2001) IGFBP-3 and apoptosis--a license to kill? Apoptosis. 6(3): 199-205.
3. Ali O, et al. (2003) Epidemiology and biology of insulin-like growth factor binding protein-3 (IGFBP-3) as an anti-cancer molecule. Horm Metab Res. 35(11-12): 726-33.