

# TRAIL R2 / TNFRSF10B / CD262 Antibody (PE), Rabbit MAb



Sino Biological  
Biological Solution Specialist

Catalog Number: 10465-R102-P

EliteRmab® is a registered trademark of Sino Biological Inc.

## GENERAL INFORMATION

<b>Immunogen:</b>	Recombinant Human TRAIL R2 / TNFRSF10B / CD262 protein (Catalog#10465-H08H)
<b>Reagents:</b>	PE-conjugated Rabbit monoclonal antibody
<b>Preparation</b>	This antibody was obtained from a rabbit immunized with purified, recombinant Human TRAIL R2 / TNFRSF10B / CD262 (rh TRAIL R2 / TNFRSF10B / CD262; Catalog#10465-H08H; NP_003833.4; Met 1-Glu 182) and conjugated with PE under optimum conditions, the unreacted PE was removed.
<b>Ig Type:</b>	Rabbit IgG
<b>Clone ID:</b>	102
<b>Specificity:</b>	Human TRAIL R2 / TNFRSF10B / CD262
<b>Concentration:</b>	10 µl/Test, 0.1 mg/ml
<b>Formulation:</b>	PBS solution containing 0.5% BSA and 0.03%ProClin300
<b>Storage:</b>	This antibody can be stored at 2°C-8°C for twelve months without detectable loss of activity. Protected from prolonged exposure to light. Do not freeze !
<b>Alternative Names:</b>	TNFRSF10B

## APPLICATIONS

<b>Applications:</b>	FCM
----------------------	-----

## RECOMMENDED CONCENTRATION

*Please Note: Optimal concentrations/dilutions should be determined by the end user.*

**For Research Use Only. Not for use in diagnostic or therapeutic procedures.**

**Tel: +86-400-890-9989 (Global), +1-215-583-7898 (USA), +49(0)6196 9678656 (Europe)**

**Website: <http://www.sinobiological.com>**

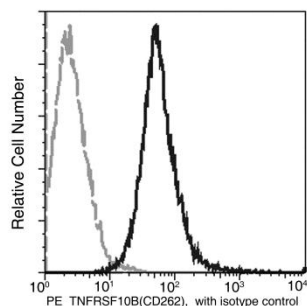
# TRAIL R2 / TNFRSF10B / CD262 Antibody (PE), Rabbit MAb

Catalog Number: 10465-R102-P



Sino Biological  
Biological Solution Specialist

EliteRmab® is a registered trademark of Sino Biological Inc.



Profile of anti-TNFRSF10B (CD262) reactivity  
on Jurkat cells analyzed by flow cytometry.

Flow cytometry was performed on a BD  
FACSCalibur flow cytometry system.  
Please refer to [www.sinobiological.com/Flow-Cytometry-FACS-Protocols-a-750.html](http://www.sinobiological.com/Flow-Cytometry-FACS-Protocols-a-750.html) for  
technical protocols.

**For Research Use Only. Not for use in diagnostic or therapeutic procedures.**

**Tel: +86-400-890-9989 (Global), +1-215-583-7898 (USA), +49(0)6196 9678656 (Europe)**

**Website: <http://www.sinobiological.com>**