

# Human CCL13 / MCP-4 Protein (His Tag)



Sino Biological  
Biological Solution Specialist

Catalog Number: 10475-H08Y

## General Information

### Gene Name Synonym:

CCL13; CKb10; MCP-4; MCP4; NCC-1; NCC1; SCYA13; SCYL1

### Protein Construction:

A DNA sequence encoding human CCL13 (NP\_005399.1) (Gln24-Thr98) was expressed with a polyhistidine tag at the C-terminus.

**Source:** Human

**Expression Host:** Yeast

## QC Testing

**Purity:** > 95 % as determined by SDS-PAGE

### Endotoxin:

Please contact us for more information.

### Stability:

Samples are stable for up to twelve months from date of receipt at -70 °C

**Predicted N terminal:** Gln 24

### Molecular Mass:

The recombinant human CCL13 consists of 85 amino acids and predicts a molecular mass of 10 KDa. It migrates as an approximately 14 KDa band in SDS-PAGE under reducing conditions.

### Formulation:

Lyophilized from sterile PBS, pH 7.4.

Normally 5 % - 8 % trehalose, mannitol and 0.01% Tween80 are added as protectants before lyophilization. Specific concentrations are included in the hardcopy of COA. Please contact us for any concerns or special requirements.

## Usage Guide

### Storage:

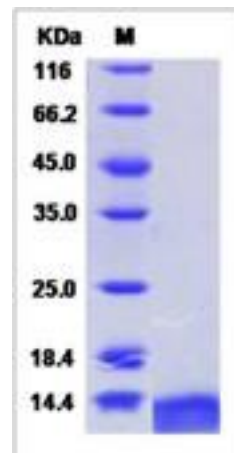
Store it under sterile conditions at -20°C to -80°C upon receiving. Recommend to aliquot the protein into smaller quantities for optimal storage.

**Avoid repeated freeze-thaw cycles.**

### Reconstitution:

Detailed reconstitution instructions are sent along with the products.

## SDS-PAGE:



Manufactured By Sino Biological Inc., FOR RESEARCH USE ONLY. NOT FOR USE IN HUMANS.

For US Customer: Fax: 267-657-0217 • Tel: 215-583-7898

Global Customer: Fax :+86-10-5862-8288 • Tel:+86-400-890-9989 • <http://www.sinobiological.com>