

# Human CCL16 / HCC-4 / NCC4 Protein (His Tag)

Catalog Number: 10491-H08Y



Sino Biological  
Biological Solution Specialist

## General Information

### Gene Name Synonym:

CCL16; CKb12; HCC-4; ILINCK; LCC-1; LEC; LMC; Mtn-1; NCC-4; NCC4; SCYA16; SCYL4

### Protein Construction:

A DNA sequence encoding human CCL16 (NP\_004581.1) (Gln24-Gln120) was expressed with a polyhistidine tag at the C-terminus.

**Source:** Human

**Expression Host:** Yeast

## QC Testing

**Purity:** > 95 % as determined by SDS-PAGE

### Endotoxin:

Please contact us for more information.

### Stability:

Samples are stable for up to twelve months from date of receipt at -70 °C

**Predicted N terminal:** Gln 24

### Molecular Mass:

The recombinant human CCL16 consists of 107 amino acids and predicts a molecular mass of 12.6 KDa. It migrates as an approximately 15 KDa band in SDS-PAGE under reducing conditions.

### Formulation:

Lyophilized from sterile PBS, pH 7.4.

Normally 5 % - 8 % trehalose, mannitol and 0.01% Tween80 are added as protectants before lyophilization. Specific concentrations are included in the hardcopy of COA. Please contact us for any concerns or special requirements.

## Usage Guide

### Storage:

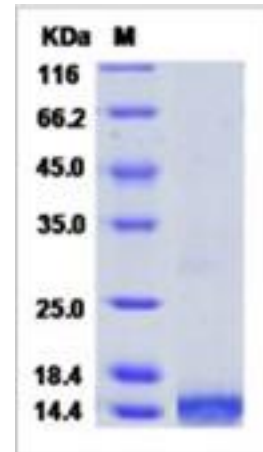
Store it under sterile conditions at -20°C to -80°C upon receiving. Recommend to aliquot the protein into smaller quantities for optimal storage.

**Avoid repeated freeze-thaw cycles.**

### Reconstitution:

Detailed reconstitution instructions are sent along with the products.

## SDS-PAGE:



## Protein Description

CCL16, a chemokine poorly characterized at the functional level. Human CCL16 is a member of the CC family, and its gene maps to human chromosome 17q. In the mouse, only a pseudogene has been identified to date. CCL16 is a functional ligand for CCR1, CCR2, CCR5, and CCR8. Recombinant CCL16 demonstrated chemotactic activity on human monocytes and lymphocytes. Based on the ability of human chemokines to exert activity on and bind to murine receptors, the TSA mouse adenocarcinoma cell line was transfected with human CCL16 cDNA and, in comparison with other cytokines, was shown to be the faster inducer of systemic immune response due to massive, prompt infiltration of leukocytes.

## References

3.Guiducci C, Di Carlo E, Parenza M, *et al.* Intralesional injection of adenovirus encoding CC chemokine ligand 16 inhibits mammary tumor growth and prevents metastatic-induced death after surgical removal of the treated primary tumor[J]. The Journal of Immunology, 2004, 172(7): 4026-4036.

Manufactured By Sino Biological Inc., FOR RESEARCH USE ONLY. NOT FOR USE IN HUMANS.

For US Customer: Fax: 267-657-0217 • Tel: 215-583-7898

Global Customer: Fax :+86-10-5862-8288 • Tel:+86-400-890-9989 • <http://www.sinobiological.com>