

**Carboxypeptidase A1 / CPA1
Antibody, Rabbit PAb, Antigen
Affinity Purified**

Catalog Number: 10504-RP02



Sino Biological
Biological Solution Specialist

GENERAL INFORMATION	
Immunogen:	Recombinant Human Carboxypeptidase A1 / CPA1 protein (Catalog#10504-H08H)
Preparation	Produced in rabbits immunized with purified, recombinant Human Carboxypeptidase A1 / CPA1 (rh Carboxypeptidase A1 / CPA1; Catalog#10504-H08H; NP_001859.1; Met 1-Tyr 419). Carboxypeptidase A1 / CPA1 specific IgG was purified by Human Carboxypeptidase A1 / CPA1 affinity chromatography.
Ig Type:	Rabbit IgG
Specificity:	Human Carboxypeptidase A1 / CPA1
Formulation:	0.2 µm filtered solution in PBS
Storage:	This antibody can be stored at 2°C-8°C for one month without detectable loss of activity. Antibody products are stable for twelve months from date of receipt when stored at -20°C to -80°C. Preservative-Free. Avoid repeated freeze-thaw cycles.
APPLICATIONS	
Applications:	WB,ELISA,IHC-P,IP
RECOMMENDED CONCENTRATION	
IHC-P	IHC-P: 1:2500-1:10000
Western Blot	WB: 1:500-1:2000
Immunoprecipitation	IP: 4-6 µL/mg of lysate
ELISA	ELISA: 1:5000-1:10000 This antibody can be used at 1:5000-1:10000 with the appropriate secondary reagents to detect Human CPA1.

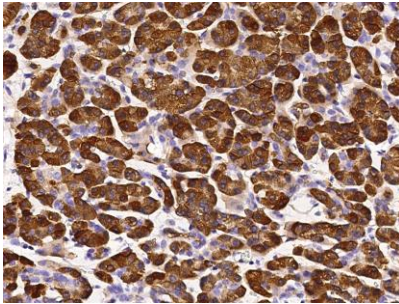
Please Note: Optimal concentrations/dilutions should be determined by the end user.

Carboxypeptidase A1 / CPA1 Antibody, Rabbit PAb, Antigen Affinity Purified

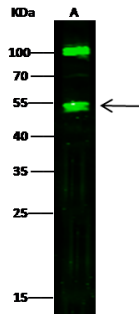
Catalog Number: 10504-RP02



Sino Biological
Biological Solution Specialist



Immunohistochemical staining of human CPA1 in human pancreas with rabbit polyclonal antibody (1:5000, formalin-fixed paraffin embedded sections).



Anti-CPA1 rabbit polyclonal antibody at 1:500 dilution

Lane A: Jurkat Whole Cell Lysate

Lysates/proteins at 60 µg per lane.

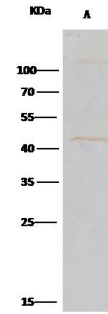
Secondary

Goat Anti-Rabbit IgG H&L (Dylight800) at 1/10000 dilution.

Developed using the Odyssey technique.
Performed under reducing conditions.

Predicted band size: 55 kDa

Observed band size: 47 kDa (We are unsure as to the identity of these extra bands.)



CPA1 was immunoprecipitated using:
Lane A: 0.5 mg Jurkat Whole Cell Lysate

2 µL anti-CPA1 rabbit polyclonal antibody and 15 µL of 50 % Protein G agarose.

Primary antibody:

Anti-CPA1 rabbit polyclonal antibody, at 1:200 dilution

Secondary antibody:

Clean-Blot® IP Detection Reagent (HRP) at 1:1000 dilution

Developed using the DAB staining technique.
Performed under reducing conditions.

Predicted band size: 50 kDa

Observed band size: 50 kDa