

# Tie1 Antibody, Mouse MAb



Sino Biological  
Biological Solution Specialist

Catalog Number: 10509-MM08

GENERAL INFORMATION	
Immunogen:	Recombinant Human Tie1 Protein (Catalog#10509-H08H)
Preparation	This antibody was produced from a hybridoma resulting from the fusion of a mouse myeloma with B cells obtained from a mouse immunized with purified, recombinant Human Tie1 (rh Tie1; Catalog#10509-H08H; NP_005415.1; Met 1-Gln 760). The IgG fraction of the cell culture supernatant was purified by Protein A affinity chromatography.
Ig Type:	Mouse IgG2b
Clone ID:	8D2D2
Specificity:	Human Tie1
	No cross-reactivity in ELISA with Human Tie2 Human cell lysate (293 cell line)
Formulation:	0.2 µm filtered solution in PBS
Storage:	This antibody can be stored at 2°C-8°C for one month without detectable loss of activity. Antibody products are stable for twelve months from date of receipt when stored at -20°C to -80°C. Preservative-Free. Avoid repeated freeze-thaw cycles.
APPLICATIONS	
Applications:	ELISA(Det),IHC-P
RECOMMENDED CONCENTRATION	
IHC-P	IHC-P: 1:50-1:200
Sandwich ELISA (Detection Ab)	ELISA(Det): 1:1000-1:10000 This antibody will detect Human Tie1 in ELISA pair set (Catalog: # SEK10509). In a sandwich ELISA, it can be used as detection antibody when paired with (Catalog: # 10509-MM03).

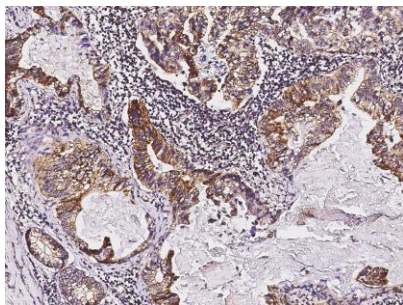
**Please Note: Optimal concentrations/dilutions should be determined by the end user.**

# Tie1 Antibody, Mouse MAb

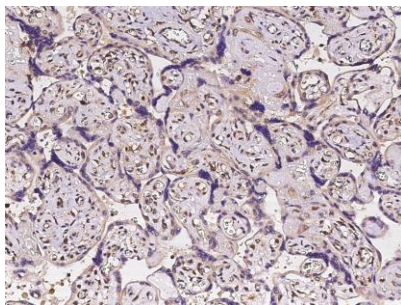


Sino Biological  
Biological Solution Specialist

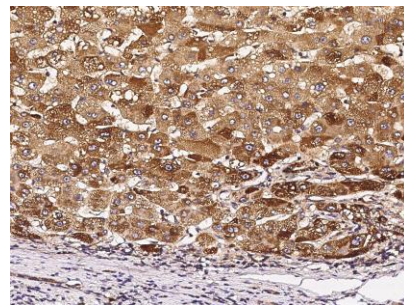
Catalog Number: 10509-MM08



Immunohistochemical staining of human TIE1 in human stomach carcinoma with mouse monoclonal antibody (1:60, formalin-fixed paraffin embedded sections).



Immunohistochemical staining of human TIE1 in human placenta with mouse monoclonal antibody (1:60, formalin-fixed paraffin embedded sections).



Immunohistochemical staining of human TIE1 in human liver(cirrhosis) with mouse monoclonal antibody (1:60, formalin-fixed paraffin embedded sections).