

EpCAM / TROP-1 / TACSTD1 Antibody, Mouse MAb



Sino Biological
Biological Solution Specialist

Catalog Number: 10694-MM05

GENERAL INFORMATION	
Immunogen:	Recombinant Human EpCAM protein (Catalog#10694-H08H)
Preparation	This antibody was produced from a hybridoma resulting from the fusion of a mouse myeloma with B cells obtained from a mouse immunized with purified, recombinant Human EpCAM / TROP1 (rh EpCAM; Catalog#10694-H08H; NP_002345.1; Met 1-Lys 265). The IgG fraction of the cell culture supernatant was purified by Protein A affinity chromatography.
Ig Type:	Mouse IgG1
Clone ID:	4A8H7D12
Specificity:	Human EpCAM / TROP1 / CD326
	No cross-reactivity in ELISA with Human CD146 / MCAM Human CD171 / L1CAM Human OBCAM / OPCML Human TROP2 / TACSTD2
Formulation:	0.2 µm filtered solution in PBS
Storage:	This antibody can be stored at 2°C-8°C for one month without detectable loss of activity. Antibody products are stable for twelve months from date of receipt when stored at -20°C to -80°C. Preservative-Free. Sodium azide is recommended to avoid contamination (final concentration 0.05%-0.1%). It is toxic to cells and should be disposed of properly. Avoid repeated freeze-thaw cycles.
APPLICATIONS	
Applications:	WB
RECOMMENDED CONCENTRATION	
Western Blot	WB: 1:500-1:1000

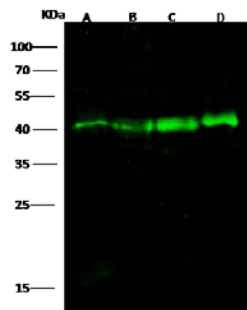
Please Note: Optimal concentrations/dilutions should be determined by the end user.

EpCAM / TROP-1 / TACSTD1 Antibody, Mouse MAb



Sino Biological
Biological Solution Specialist

Catalog Number: 10694-MM05



Anti-EPCAM mouse monoclonal antibody at
1:500 dilution

Lane A: A431 Whole Cell Lysate

Lane B: MCF7 Whole Cell Lysate

Lane C: HCT116 Whole Cell Lysate

Lane D: COLO205 Whole Cell Lysate

Lysates/proteins at 30 µg per lane.

Secondary

Goat Anti-Mouse IgG H&L (Dylight800) at

1/15000 dilution.

Developed using the Odyssey technique.

Performed under reducing conditions.

Predicted band size: 35 kDa

Observed band size: 40 kDa