

CD36 / SCARB3 Antibody, Rabbit MAb



Sino Biological
Biological Solution Specialist

Catalog Number: 10752-R010

EliteRmab® is a registered trademark of Sino Biological Inc.

GENERAL INFORMATION

Immunogen:	Recombinant Human CD36 / SCARB3 protein (Catalog#10752-H08H)
Preparation	This antibody was obtained from a rabbit immunized with purified, recombinant Human CD36 / SCARB3 (rh CD36 / SCARB3; Catalog#10752-H08H; NP_001001547.1; Gly30-Asn439).
Ig Type:	Rabbit IgG
Clone ID:	010
Specificity:	Human CD36 / SCARB3
Formulation:	0.2 µm filtered solution in PBS
Storage:	This antibody can be stored at 2°C-8°C for one month without detectable loss of activity. Antibody products are stable for twelve months from date of receipt when stored at -20°C to -80°C. Preservative-Free. Avoid repeated freeze-thaw cycles.

APPLICATIONS

Applications:	WB
----------------------	----

RECOMMENDED CONCENTRATION

Western Blot	WB: 1:500-1:1000
---------------------	------------------

Please Note: Optimal concentrations/dilutions should be determined by the end user.

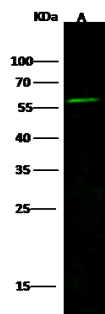
CD36 / SCARB3 Antibody, Rabbit MAb

Catalog Number: 10752-R010



Sino Biological
Biological Solution Specialist

EliteRmab® is a registered trademark of Sino Biological Inc.



Anti-CD36 rabbit monoclonal antibody at 1:500 dilution

Lane A: K562 Whole Cell Lysate

Lysates/proteins at 30 µg per lane.

Secondary

Goat Anti-Rabbit IgG H&L (Dylight800) at 1/10000 dilution.

Developed using the Odyssey technique.

Performed under reducing conditions.

Predicted band size: 53 kDa

Observed band size: 56 kDa