

CD21 Antibody, Rabbit PAb, Antigen Affinity Purified



Sino Biological
Biological Solution Specialist

Catalog Number: 10811-RP02

GENERAL INFORMATION	
Immunogen:	Recombinant Human CD21 protein (Catalog#10811-H08H)
Preparation	Produced in rabbits immunized with purified, recombinant Human CD21 (rh CD21; Catalog#10811-H08H; P20023-1; Met 1-Arg 971). CD21 specific IgG was purified by Human CD21 affinity chromatography.
Ig Type:	Rabbit IgG
Specificity:	Human, Cynomolgus
	Does not react with Mouse, Rat
Formulation:	0.2 µm filtered solution in PBS
Storage:	This antibody can be stored at 2°C-8°C for one month without detectable loss of activity. Antibody products are stable for twelve months from date of receipt when stored at -20°C to -80°C. Preservative-Free. Sodium azide is recommended to avoid contamination (final concentration 0.05%-0.1%). It is toxic to cells and should be disposed of properly. Avoid repeated freeze-thaw cycles.
APPLICATIONS	
Applications:	WB,ELISA,IHC-P,IP
RECOMMENDED CONCENTRATION	
IHC-P	IHC-P: 1:200-1:10000
Western Blot	WB: 1:500-1:1000
Immunoprecipitation	IP: 0.2-1 µL/mg of lysate
ELISA	ELISA: 1:25000-1:50000 This antibody can be used at 1:25000-1:50000 with the appropriate secondary reagents to detect Human CD21.

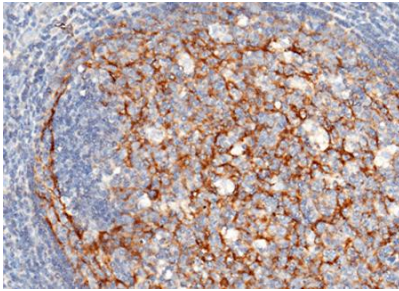
Please Note: Optimal concentrations/dilutions should be determined by the end user.

CD21 Antibody, Rabbit PAb, Antigen Affinity Purified

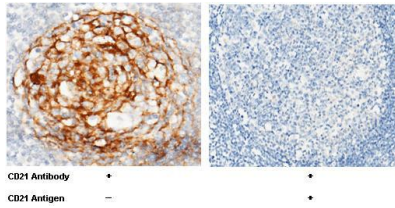
Catalog Number: 10811-RP02



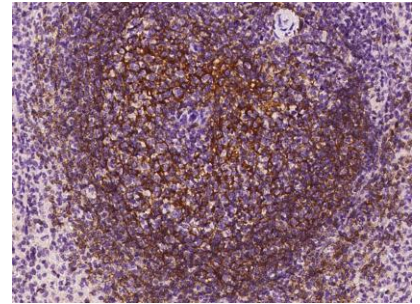
Sino Biological
Biological Solution Specialist



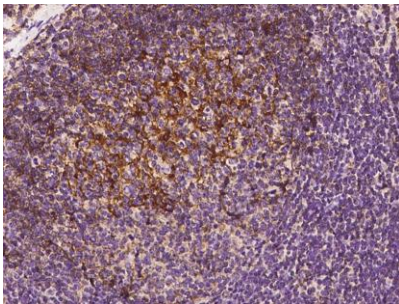
Immunohistochemical staining CD21 in human tonsil with rabbit polyclonal antibody at 1:5000 dilution, formalin-fixed paraffin embedded sections. Positive staining was localized to germinal center.



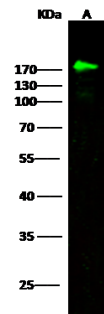
Immunohistochemical staining CD21 in human lymph node with rabbit polyclonal antibody at 1:5000 dilution, formalin-fixed paraffin embedded sections. Positive staining was localized to germinal center. The left panel: tissue incubated with primary antibody; The right panel: tissue incubated with the mixture of primary antibody and antigen (recombinant protein).



Immunohistochemical staining CD21 in cynomolgus spleen with rabbit polyclonal antibody at 1:300 dilution, formalin-fixed paraffin embedded sections.



Immunohistochemical staining CD21 in cynomolgus lymph node with rabbit polyclonal antibody at 1:300 dilution, formalin-fixed paraffin embedded sections.

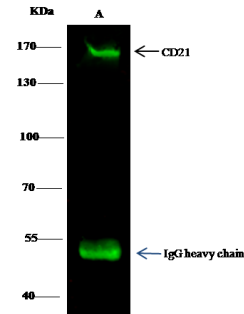


Anti-CD21 rabbit polyclonal antibody at 1:500 dilution
Lane A: 293T Membrane Lysate

Lysates/proteins at 20 µg per lane.
Secondary
Goat Anti-Rabbit IgG H&L (Dylight800) at 1/10000 dilution.

Developed using the Odyssey technique.
Performed under reducing conditions.

Predicted band size: 113 kDa
Observed band size: 170 kDa



CD21 was immunoprecipitated using:
Lane A: 0.5 mg Daudi Whole Cell Lysate

0.5 µL anti-CD21 rabbit polyclonal antibody and 15 µL of 50 % Protein G agarose.

Primary antibody:
Anti-CD21 rabbit polyclonal antibody, at 1:350 dilution

Secondary antibody:
Dylight 800-labeled antibody to rabbit IgG (H+L), at 1:5000 dilution

Developed using the Odyssey technique.
Performed under reducing conditions.

Predicted band size: 170 kDa
Observed band size: 170 kDa

Manufactured By Sino Biological Inc., FOR RESEARCH USE ONLY. NOT FOR USE IN HUMANS.

Tel: 215-583-7898 (US); +86-400-890-9989(Global) ●

<http://www.sinobiological.com>