

# Granulin / GRN / Progranulin Antibody, Mouse MAb



Sino Biological  
Biological Solution Specialist

Catalog Number: 10826-MM02

## GENERAL INFORMATION

Immunogen:	Recombinant Human Granulin protein (Catalog#10826-H08H)
Preparation	This antibody was produced from a hybridoma resulting from the fusion of a mouse myeloma with B cells obtained from a mouse immunized with purified, recombinant Human Granulin / GRN (rhGRN; Catalog#10826-H08H; Met 1-Leu 593; NP_002078.1). The IgG fraction of the cell culture supernatant was purified by Protein A affinity chromatography.
Ig Type:	Mouse IgG1
Clone ID:	2F3G11
Specificity:	Human Granulin / GRN
Formulation:	0.2 µm filtered solution in PBS
Storage:	This antibody can be stored at 2°C-8°C for one month without detectable loss of activity. Antibody products are stable for twelve months from date of receipt when stored at -20°C to -80°C. Preservative-Free. Avoid repeated freeze-thaw cycles.
Alternative Names:	CLN11,GEP,GP88,Granulin,PCDGF,PEPI,PGRN,Progranulin

## APPLICATIONS

Applications:	ELISA,ELISA(Det),ICC/IF
---------------	-------------------------

## RECOMMENDED CONCENTRATION

ICC/IF	ICC/IF: 1:20-1:100
ELISA	ELISA: 1:1000-1:2000 This antibody can be used at 1:1000-1:2000 with the appropriate secondary reagents to detect GRN.
Sandwich ELISA (Detection Ab)	ELISA(Det): 1:1000-1:10000 This antibody will detect Human Progranulin / Granulin in ELISA pair set (Catalog: # SEKA10826). In a sandwich ELISA, it can be used as detection antibody when paired with (Catalog: # 10826-MM10).

**Please Note: Optimal concentrations/dilutions should be determined by the end user.**

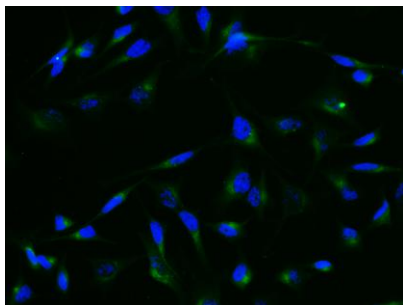
# Granulin / GRN / Progranulin Antibody, Mouse MAb



Sino Biological  
Biological Solution Specialist

Catalog Number: 10826-MM02

---



Immunofluorescence staining of Human GRN in Hela cells. Cells were fixed with 4% PFA, blocked with 10% serum, and incubated with mouse anti-Human GRN monoclonal antibody (1:60). Then cells were stained with the Alexa Fluor® 488-conjugated Goat Anti-mouse IgG secondary antibody (green) and counterstained with DAPI (blue). Positive staining was localized to cytoplasm.