

# Human CCL4 / MIP1B Protein (His Tag)



Sino Biological  
Biological Solution Specialist

Catalog Number: 10899-H08Y

## General Information

### Gene Name Synonym:

ACT2; AT744.1; G-26; HC21; LAG-1; LAG1; MIP-1-beta; MIP1B; MIP1B1; SCYA2; SCYA4

### Protein Construction:

A DNA sequence encoding human CCL4 (NP\_002975.1) (Ala24-Gln92) was expressed with a polyhistidine tag at the C-terminus.

**Source:** Human

**Expression Host:** Yeast

## QC Testing

**Purity:** > 90 % as determined by SDS-PAGE

### Endotoxin:

Please contact us for more information.

### Stability:

Samples are stable for up to twelve months from date of receipt at -70 °C

**Predicted N terminal:** Ala 24

### Molecular Mass:

The recombinant human CCL4 consists of 79 amino acids and predicts a molecular mass of 9.2 KDa. It migrates as an approximately 12-16 KDa band in SDS-PAGE under reducing conditions.

### Formulation:

Lyophilized from sterile 0.1 % TFA.

Normally 5 % - 8 % trehalose, mannitol and 0.01% Tween80 are added as protectants before lyophilization. Specific concentrations are included in the hardcopy of COA. Please contact us for any concerns or special requirements.

## Usage Guide

### Storage:

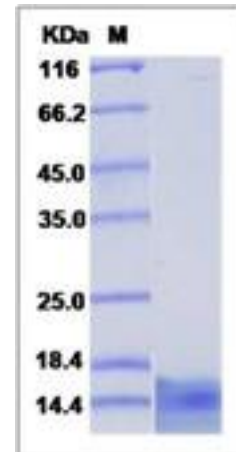
Store it under sterile conditions at -20°C to -80°C upon receiving. Recommend to aliquot the protein into smaller quantities for optimal storage.

**Avoid repeated freeze-thaw cycles.**

### Reconstitution:

Detailed reconstitution instructions are sent along with the products.

## SDS-PAGE:



Manufactured By Sino Biological Inc., FOR RESEARCH USE ONLY. NOT FOR USE IN HUMANS.

For US Customer: Fax: 267-657-0217 • Tel: 215-583-7898

Global Customer: Fax :+86-10-5862-8288 • Tel:+86-400-890-9989 • <http://www.sinobiological.com>