

# LRPAP1 / A2MRAP Antibody, Mouse MAb



Sino Biological  
Biological Solution Specialist

Catalog Number: 11100-MM01

## GENERAL INFORMATION

Immunogen:	Recombinant Human LRPAP1 protein (Catalog#11100-H08H)
Preparation	This antibody was produced from a hybridoma resulting from the fusion of a mouse myeloma with B cells obtained from a mouse immunized with purified, recombinant Human LRPAP1 / A2MRAP (rh LRPAP1; Catalog#11100-H08H; Tyr 35-Leu 357; NP_002328.1). The IgG fraction of the cell culture supernatant was purified by Protein A affinity chromatography.
Ig Type:	Mouse IgG
Clone ID:	1D6F3B4
Specificity:	Human LRPAP1 / A2MRAP
Formulation:	0.2 µm filtered solution in PBS
Storage:	This antibody can be stored at 2°C-8°C for one month without detectable loss of activity. Antibody products are stable for twelve months from date of receipt when stored at -20°C to -80°C. Preservative-Free. Sodium azide is recommended to avoid contamination (final concentration 0.05%-0.1%). It is toxic to cells and should be disposed of properly. Avoid repeated freeze-thaw cycles.

## APPLICATIONS

Applications:	WB,ELISA,IHC-P,IP
---------------	-------------------

## RECOMMENDED CONCENTRATION

IHC-P	IHC-P: 1:500-1:2000
Western Blot	WB: 1:500-1:1000
Immunoprecipitation	IP: 1-2 µL/mg of lysate
ELISA	ELISA: 1:5000-1:10000 This antibody can be used at 1:5000-1:10000 with the appropriate secondary reagents to detect Human LRPAP1.

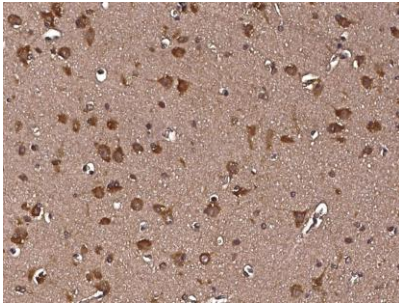
**Please Note: Optimal concentrations/dilutions should be determined by the end user.**

# LRPAP1 / A2MRAP Antibody, Mouse MAb

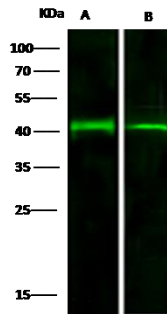


Sino Biological  
Biological Solution Specialist

Catalog Number: 11100-MM01



Immunohistochemical staining of human LRPAP1 in human brain with mouse monoclonal antibody at 1:1000 dilution, formalin-fixed paraffin embedded sections.

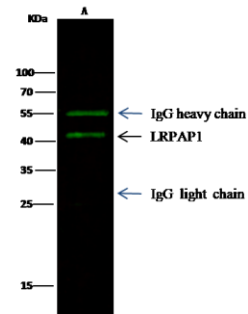


Anti-LRPAP1 mouse monoclonal antibody at 1:500 dilution  
Lane A: U87-MG Whole Cell Lysate  
Lane B: A549 Whole Cell Lysate

Lysates/proteins at 30 µg per lane.  
Secondary  
Goat Anti-Mouse IgG H&L (Dylight800) at 1/15000 dilution.

Developed using the Odyssey technique.  
Performed under reducing conditions.

Predicted band size: 41 kDa  
Observed band size: 41 kDa



LRPAP1 was immunoprecipitated using:  
Lane A: 0.5 mg 293T Whole Cell Lysate

0.5 µL anti-LRPAP1 mouse monoclonal antibody and 15 µL of 50 % Protein G agarose.

Primary antibody:  
Anti-LRPAP1 mouse monoclonal antibody, at 1:1000 dilution

Secondary antibody:  
Dylight 800-labeled antibody to Mouse IgG (H+L), at 1:7500 dilution

Developed using the odyssey technique.  
Performed under reducing conditions.

Predicted band size: 41 kDa  
Observed band size: 41 kDa