

HIV-1 gp140 Protein (group M, subtype CRF07_BC) (His Tag)

Catalog Number: 11677-V08H



Sino Biological
Biological Solution Specialist

General Information

Gene Name Synonym:

gp140

Protein Construction:

A DNA sequence encoding the HIV-1 envelope glycoprotein gp160 extracellular domain (Val30-Tyr677), termed as gp140, was fused with the bacteriophage T4 fibrin and a polyhistidine tag at the C-terminus.

Source: HIV

Expression Host: HEK293 Cells

QC Testing

Purity: > 94 % as determined by SDS-PAGE

Bio Activity:

1. Immobilized Recombinant HIV-1 gp140 Protein (group M, subtype CRF07_BC) (His Tag) (Cat: 11677-V08H) at 2 µg/mL (100 µL/well) can bind Recombinant Human CD4 Protein (Fc Tag) (Cat: 10400-H02H), the EC50 is 70-210 ng/mL.

2. Loaded Recombinant Human CD4 Protein, hFc Tag (Cat. No. 10400-H02H) on ProA Biosensor, can bind HIV-1 gp140 Protein (group M, subtype CRF07_BC), His Tag (Cat. No. 11677-V08H) with an affinity constant of 82.3 nM as determined in BLI assay (Sartorius Octet RED384) (Routinely tested).

Endotoxin:

< 1.0 EU per µg of the protein as determined by the LAL method

Stability:

Samples are stable for up to twelve months from date of receipt at -70 °C

Predicted N terminal: Val 30

Molecular Mass:

The recombinant HIV-1 gp140 consists of 694 amino acids after removal of the signal peptide and has a predicted molecular mass of 78.2 kDa. The apparent molecular mass of the recombinant protein is approximately 119 KDa in SDS-PAGE under reducing conditions.

Formulation:

Lyophilized from sterile PBS, pH 7.4

Normally 5 % - 8 % trehalose, mannitol and 0.01% Tween80 are added as protectants before lyophilization. Specific concentrations are included in the hardcopy of COA. Please contact us for any concerns or special requirements.

Usage Guide

Storage:

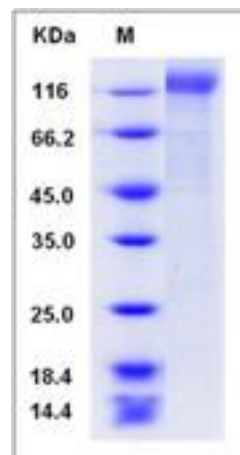
Store it under sterile conditions at -20°C to -80°C upon receiving. Recommend to aliquot the protein into smaller quantities for optimal storage.

Avoid repeated freeze-thaw cycles.

Reconstitution:

Detailed reconstitution instructions are sent along with the products.

SDS-PAGE:



Manufactured By Sino Biological Inc., FOR RESEARCH USE ONLY. NOT FOR USE IN HUMANS.

For US Customer: Fax: 267-657-0217 • Tel: 215-583-7898

Global Customer: Fax :+86-10-5862-8288 • Tel:+86-400-890-9989 • <http://www.sinobiological.com>