

# XPNPEP2 Antibody, Rabbit PAb, Antigen Affinity Purified



Sino Biological  
Biological Solution Specialist

Catalog Number: 11903-RP02

GENERAL INFORMATION	
Immunogen:	Recombinant Human XPNPEP2 protein (Catalog#11903-H08H)
Preparation	Produced in rabbits immunized with purified, recombinant Human XPNPEP2 (rh XPNPEP2; Catalog#11903-H08H; O43895; Met 1-Ala 650). XPNPEP2 specific IgG was purified by Human XPNPEP2 affinity chromatography.
Ig Type:	Rabbit IgG
Specificity:	Human XPNPEP2
Formulation:	0.2 µm filtered solution in PBS
Storage:	This antibody can be stored at 2°C-8°C for one month without detectable loss of activity. Antibody products are stable for twelve months from date of receipt when stored at -20°C to -80°C. Preservative-Free. Avoid repeated freeze-thaw cycles.
APPLICATIONS	
Applications:	ELISA,IHC-P
RECOMMENDED CONCENTRATION	
IHC-P	IHC-P: 1:500-1:2000
ELISA	ELISA: 1:5000-1:10000 This antibody can be used at 1:5000-1:10000 with the appropriate secondary reagents to detect Human XPNPEP2.

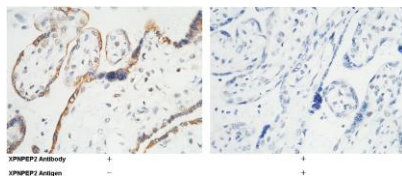
***Please Note: Optimal concentrations/dilutions should be determined by the end user.***

# XPNPEP2 Antibody, Rabbit PAb, Antigen Affinity Purified



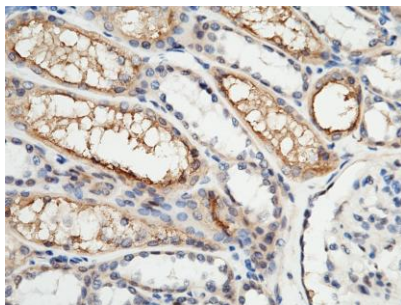
Sino Biological  
Biological Solution Specialist

Catalog Number: 11903-RP02



XPNPEP2 Antibody  
XPNPEP2 Antigen

Immunohistochemical staining of human XPNPEP2 in human placenta with rabbit polyclonal antibody (1:1000, formalin-fixed paraffin embedded sections). The left panel: tissue incubated with primary antibody; The right panel: tissue incubated with the mixture of primary antibody and antigen (recombinant protein).



Immunohistochemical staining of human XPNPEP2 in human kidney with rabbit polyclonal antibody (1:1000, formalin-fixed paraffin embedded sections).