

ULBP2 Antibody, Rabbit MAb



Sino Biological
Biological Solution Specialist

Catalog Number: 12143-R010

EliteRmab® is a registered trademark of Sino Biological Inc.

GENERAL INFORMATION

Immunogen:	Recombinant Human ULBP2 protein (Catalog#12143-H08H)
Preparation	This antibody was obtained from a rabbit immunized with purified, recombinant Human ULBP2 (rh ULBP2; Catalog#12143-H08H; Q9BZM5; Met1-Ser217).
Ig Type:	Rabbit IgG
Clone ID:	010
Specificity:	Human ULBP2
Formulation:	0.2 µm filtered solution in PBS
Storage:	This antibody can be stored at 2°C-8°C for one month without detectable loss of activity. Antibody products are stable for twelve months from date of receipt when stored at -20°C to -80°C. Preservative-Free. Avoid repeated freeze-thaw cycles.

APPLICATIONS

Applications:	WB
----------------------	----

RECOMMENDED CONCENTRATION

Western Blot	WB: 1:500-1:2000
---------------------	------------------

Please Note: Optimal concentrations/dilutions should be determined by the end user.

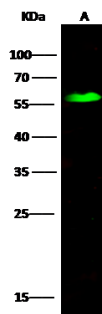
ULBP2 Antibody, Rabbit MAb



Sino Biological
Biological Solution Specialist

Catalog Number: 12143-R010

EliteRmab® is a registered trademark of Sino Biological Inc.



Anti-ULBP2 rabbit monoclonal antibody at
1:500 dilution
Lane A: Hela Whole Cell Lysate

Lysates/proteins at 30 µg per lane.
Secondary
Goat Anti-Rabbit IgG H&L (Dylight800) at
1/10000 dilution.

Developed using the Odyssey technique.
Performed under reducing conditions.

Predicted band size:27 kDa
Observed band size:55 kDa