

# L-FABP / FABP1 Antibody, Rabbit PAb, Antigen Affinity Purified



Sino Biological  
Biological Solution Specialist

Catalog Number: 12353-T40

## GENERAL INFORMATION

Immunogen:	Recombinant Human L-FABP / FABP1 Protein (Catalog#12353-H07E)
Preparation	Produced in rabbits immunized with purified, recombinant Human L-FABP / FABP1 (rh L-FABP / FABP1; Catalog#12353-H07E; NP_001434.1; Ser2-Ile127). L-FABP / FABP1 specific IgG was purified by Human L-FABP / FABP1 affinity chromatography.
Ig Type:	Rabbit IgG
Specificity:	Human L-FABP / FABP1
Formulation:	0.2 µm filtered solution in PBS
Storage:	This antibody can be stored at 2°C-8°C for one month without detectable loss of activity. Antibody products are stable for twelve months from date of receipt when stored at -20°C to -80°C. Preservative-Free. Sodium azide is recommended to avoid contamination (final concentration 0.05%-0.1%). It is toxic to cells and should be disposed of properly. Avoid repeated freeze-thaw cycles.

## APPLICATIONS

Applications:	WB,IHC-P
---------------	----------

## RECOMMENDED CONCENTRATION

IHC-P	IHC-P: 1:1000-1:4000
Western Blot	WB: 1:500-1:2000

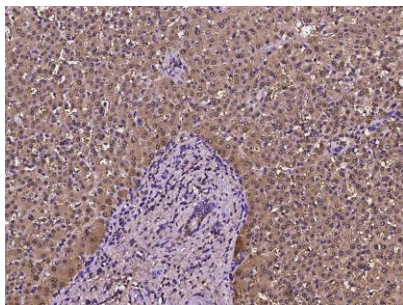
**Please Note: Optimal concentrations/dilutions should be determined by the end user.**

# L-FABP / FABP1 Antibody, Rabbit PAb, Antigen Affinity Purified

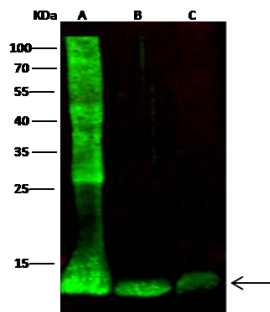


Sino Biological  
Biological Solution Specialist

Catalog Number: 12353-T40



Immunohistochemical staining of human FABP1 in human liver with rabbit polyclonal antibody (1:2000, formalin-fixed paraffin embedded sections).



Anti-FABP1 rabbit polyclonal antibody at 1:500 dilution.

Lane A: Mouse liver tissue lysate

Lane B: Rat liver tissue lysate

Lane C: HepG2 Whole Cell Lysate

Lysates/proteins at 30 ug per lane.

Secondary

Goat Anti-Rabbit IgG H&L (Dylight800) at 1/10000 dilution.

Developed using the Odyssey technique.

Performed under reducing conditions.

Predicted band size:14 kDa

Observed band size:14 kDa

(We are unsure as to the identity of these extra bands.)