

Human LMAN2 / VIP36 Protein (His Tag)

Catalog Number: 12455-H08E



Sino Biological
Biological Solution Specialist

General Information

Gene Name Synonym:

C5orf8; GP36B; VIP36

Protein Construction:

A DNA sequence encoding the human LMAN2 extracellular domain (Q12907) (As p45-Arg 322) was fused with a polyhistidine tag at the C-terminus and an initial Met at the N-terminus.

Source: Human

Expression Host: E. coli

QC Testing

Purity: > 95 % as determined by SDS-PAGE

Endotoxin:

Please contact us for more information.

Stability:

Samples are stable for up to twelve months from date of receipt at -70 °C

Predicted N terminal: Met

Molecular Mass:

The recombinant human LMAN2 consisting of 289 amino acids and has a calculated molecular mass of 33.2 kDa. It migrates as an approximately 30 kDa band in SDS-PAGE under reducing conditions.

Formulation:

Lyophilized from sterile 50mM Tris, pH 8.5

Normally 5 % - 8 % trehalose, mannitol and 0.01% Tween80 are added as protectants before lyophilization. Specific concentrations are included in the hardcopy of COA. Please contact us for any concerns or special requirements.

Usage Guide

Storage:

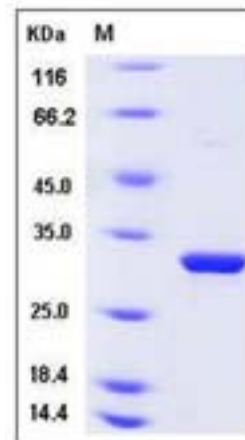
Store it under sterile conditions at -20°C to -80°C upon receiving. Recommend to aliquot the protein into smaller quantities for optimal storage.

Avoid repeated freeze-thaw cycles.

Reconstitution:

Detailed reconstitution instructions are sent along with the products.

SDS-PAGE:



References

- 1.Nawa D, *et al.* (2007) Stable interaction of the cargo receptor VIP36 with molecular chaperone BiP. *Glycobiology*. 17(9): 913-21.
- 2.Shimada O, *et al.* (2003) Localization of VIP36 in the post-Golgi secretory pathway also of rat parotid acinar cells. *J Histochem Cytochem*. 51(8): 1057-63.
- 3.Hara-Kuge S, *et al.* (1999) Vesicular-integral membrane protein, VIP36, recognizes high-mannose type glycans containing alpha1--2 mannosyl residues in MDCK cells. *Glycobiology*. 9(8): 833-9.

Manufactured By Sino Biological Inc., FOR RESEARCH USE ONLY. NOT FOR USE IN HUMANS.

For US Customer: Fax: 267-657-0217 • Tel: 215-583-7898

Global Customer: Fax :+86-10-5862-8288 • Tel:+86-400-890-9989 • <http://www.sinobiological.com>