

CIB2 Antibody, Rabbit MAb



Sino Biological
Biological Solution Specialist

Catalog Number: 12596-R001

EliteRmab® is a registered trademark of Sino Biological Inc.

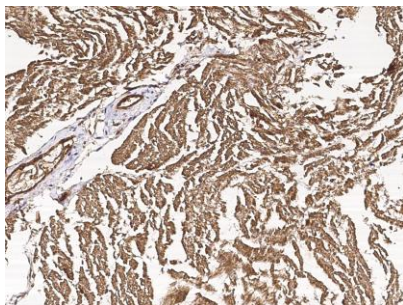
GENERAL INFORMATION	
Immunogen:	Recombinant Human CIB2 protein (Catalog#12596-H07E)
Preparation	This antibody was obtained from a rabbit immunized with purified, recombinant Human CIB2 (rh CIB2; Catalog#12596-H07E; O75838; Met 1-Ile 187).
Ig Type:	Rabbit IgG
Clone ID:	001
Specificity:	Human CIB2
Formulation:	0.2 µm filtered solution in PBS
Storage:	This antibody can be stored at 2°C-8°C for one month without detectable loss of activity. Antibody products are stable for twelve months from date of receipt when stored at -20°C to -80°C. Preservative-Free. Avoid repeated freeze-thaw cycles.
APPLICATIONS	
Applications:	ELISA,ELISA(Det),IHC-P
RECOMMENDED CONCENTRATION	
IHC-P	IHC-P: 1:1000-1:4000
ELISA	ELISA: 1:5000-1:10000 This antibody can be used at 1:5000-1:10000 with the appropriate secondary reagents to detect Human CIB2.
Sandwich ELISA (Detection Ab)	ELISA(Det): 1:1000-1:10000 This antibody will detect Human CIB2 in ELISA pair set (Catalog: # SEK12596). In a sandwich ELISA, it can be used as detection antibody when paired with (Catalog: # 12596-MM09).

Please Note: Optimal concentrations/dilutions should be determined by the end user.

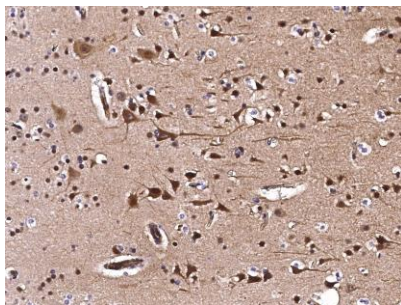


Catalog Number: 12596-R001

EliteRmab® is a registered trademark of Sino Biological Inc.



Immunohistochemical staining of human CIB2 in human heart with rabbit monoclonal antibody (1:2000, formalin-fixed paraffin embedded sections).



Immunohistochemical staining of human CIB2 in human brain with rabbit monoclonal antibody (1:2000, formalin-fixed paraffin embedded sections).