

# SOD2 Antibody, Rabbit MAb



Sino Biological  
Biological Solution Specialist

Catalog Number: 12656-R001

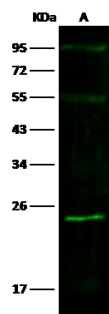
EliteRmab® is a registered trademark of Sino Biological Inc.

GENERAL INFORMATION	
Immunogen:	Recombinant Human SOD2 protein (Catalog#12656-HNAE)
Preparation	This antibody was obtained from a rabbit immunized with purified, recombinant Human SOD2 (rh SOD2; Catalog#12656-HNAE; P04179-1; Lys 25-Lys 222).
Ig Type:	Rabbit IgG
Clone ID:	001
Specificity:	Human SOD2
Formulation:	0.2 µm filtered solution in PBS
Storage:	This antibody can be stored at 2°C-8°C for one month without detectable loss of activity. Antibody products are stable for twelve months from date of receipt when stored at -20°C to -80°C. Preservative-Free. Avoid repeated freeze-thaw cycles.
APPLICATIONS	
Applications:	WB,ELISA,IP
RECOMMENDED CONCENTRATION	
Western Blot	WB: 1:2000-1:10000
Immunoprecipitation	IP: 1-4 µL/mg of lysate
ELISA	ELISA: 1:5000-1:10000 This antibody can be used at 1:5000-1:10000 with the appropriate secondary reagents to detect Human SOD2.

**Please Note: Optimal concentrations/dilutions should be determined by the end user.**

Catalog Number: 12656-R001

EliteRmab® is a registered trademark of Sino Biological Inc.

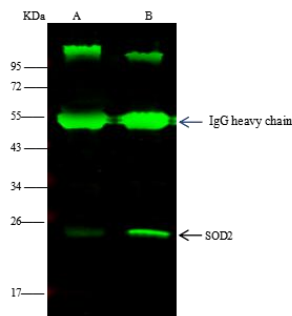


Anti-SOD2 rabbit monoclonal antibody at 1:10000 dilution  
Lane A: HeLa Whole Cell Lysate

Lysates/proteins at 30 µg per lane.  
Secondary  
Goat Anti-Rabbit IgG H&L (Dylight800) at 1/10000 dilution.

Developed using the Odyssey technique.  
Performed under reducing conditions.

Predicted band size: 25 kDa  
Observed band size: 25 kDa



SOD2 was immunoprecipitated using:  
Lane A: 0.5 mg HeLa Whole Cell Lysate  
Lane B: 0.5 mg HepG2 Whole Cell Lysate

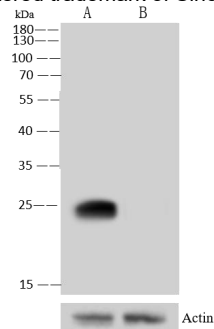
2 µL anti-SOD2 rabbit monoclonal antibody and 15 µL of 50 % Protein G agarose.

Primary antibody:  
Anti-SOD2 rabbit monoclonal antibody, at 1:100 dilution

Secondary antibody:  
Dylight 800-labeled antibody to rabbit IgG (H+L), at 1:5000 dilution

Developed using the odssey technique.  
Performed under reducing conditions.

Predicted band size: 16 kDa  
Observed band size: 18 kDa



Anti-SOD2 rabbit monoclonal antibody at 1:500 dilution  
Lane A: HeLa Whole Cell Lysate  
Lane B: SOD2 konckout HeLa Whole Cell Lysate

Lysates/proteins at 30 µg per lane.

Secondary  
Goat Anti-Rabbit IgG (H+L)/HRP at 1/10000 dilution.

Developed using the ECL technique.  
Performed under reducing conditions.

Predicted band size: 24 kDa  
Observed band size: 24 kDa

#### Validation Experiment