

**PTH / PTH1 / Parathyroid Hormone
Antibody, Rabbit PAb, Antigen
Affinity Purified**

Catalog Number: 13192-T08



Sino Biological
Biological Solution Specialist

GENERAL INFORMATION

Immunogen:	Recombinant Human PTH / PTH1 / Parathyroid Hormone protein (Catalog#13192-H09E)
Preparation	Produced in rabbits immunized with purified, recombinant Human PTH / PTH1 / Parathyroid Hormone (rh PTH / PTH1 / Parathyroid Hormone; Catalog#13192-H09E; P01270; Ser32-Phe65). PTH / PTH1 / Parathyroid Hormone specific IgG was purified by Human PTH / PTH1 / Parathyroid Hormone affinity chromatography.
Ig Type:	Rabbit IgG
Specificity:	Human PTH / PTH1 / Parathyroid Hormone
Formulation:	0.2 µm filtered solution in PBS
Storage:	This antibody can be stored at 2°C-8°C for one month without detectable loss of activity. Antibody products are stable for twelve months from date of receipt when stored at -20°C to -80°C. Preservative-Free. Sodium azide is recommended to avoid contamination (final concentration 0.05%-0.1%). It is toxic to cells and should be disposed of properly. Avoid repeated freeze-thaw cycles.

APPLICATIONS

Applications:	IHC-P
----------------------	-------

RECOMMENDED CONCENTRATION

IHC-P	IHC-P: 1:1000-1:4000
--------------	----------------------

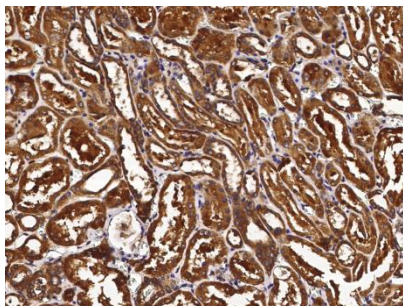
Please Note: Optimal concentrations/dilutions should be determined by the end user.

**PTH / PTH1 / Parathyroid Hormone
Antibody, Rabbit PAb, Antigen
Affinity Purified**

Catalog Number: 13192-T08

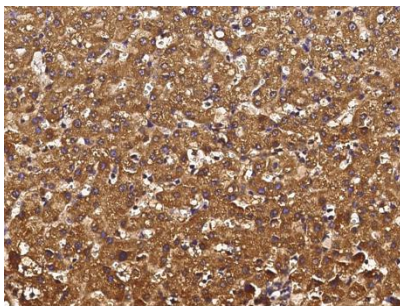


Sino Biological
Biological Solution Specialist



© Sino Biological Inc. All rights reserved

Immunohistochemical staining of human PTH in human kidney with rabbit polyclonal antibody (1:2000, formalin-fixed paraffin embedded sections).



© Sino Biological Inc. All rights reserved

Immunohistochemical staining of human PTH in human liver with rabbit polyclonal antibody (1:2000, formalin-fixed paraffin embedded sections).