

Human MMP-26 / Matrix metalloproteinase-26 Protein

Catalog Number: 13415-HNAE



Sino Biological
Biological Solution Specialist

General Information

Gene Name Synonym:

MMP26

Protein Construction:

A DNA sequence encoding the human MMP26 (NP_068573.2) (Thr90-Pro261) was expressed and purified with an initial Met.

Source: Human

Expression Host: E. coli

QC Testing

Purity: > 90 % as determined by SDS-PAGE

Bio Activity:

Measured by its ability to cleave the fluorogenic peptide substrate, Mca-Pro-Leu-Gly-Leu-Dpa-Ala-Arg-NH₂. The specific activity is > 60 pmol/min/μg.

Endotoxin:

Please contact us for more information.

Stability:

Samples are stable for up to twelve months from date of receipt at -70 °C

Predicted N terminal: His

Molecular Mass:

The recombinant human MMP26 consists of 173 amino acids and predicts a molecular mass of 19.6 kDa. It migrates as an approximately 19 kDa band in SDS-PAGE under reducing conditions.

Formulation:

Lyophilized from sterile 50 mM Tris, 2 mM CaCl₂, pH 7.8.

Normally 5 % - 8 % trehalose, mannitol and 0.01% Tween80 are added as protectants before lyophilization. Specific concentrations are included in the hardcopy of COA. Please contact us for any concerns or special requirements.

Usage Guide

Storage:

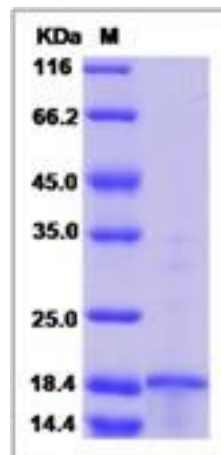
Store it under sterile conditions at -20°C to -80°C upon receiving. Recommend to aliquot the protein into smaller quantities for optimal storage.

Avoid repeated freeze-thaw cycles.

Reconstitution:

Detailed reconstitution instructions are sent along with the products.

SDS-PAGE:



Manufactured By Sino Biological Inc., FOR RESEARCH USE ONLY. NOT FOR USE IN HUMANS.

For US Customer: Fax: 267-657-0217 • Tel: 215-583-7898

Global Customer: Fax :+86-10-5862-8288 • Tel:+86-400-890-9989 • <http://www.sinobiological.com>