

# Human BCL2L11 / Bim Protein (His Tag)

Catalog Number: 13816-H07E



Sino Biological  
Biological Solution Specialist

## General Information

### Gene Name Synonym:

BAM; BIM; BOD

### Protein Construction:

A DNA sequence encoding the human BCL2L11 (NP\_006529.1) (Ala2-Arg120) was expressed with a polyhistidine tag at the N-terminus.

**Source:** Human

**Expression Host:** E. coli

## QC Testing

**Purity:** > 90 % as determined by SDS-PAGE

### Endotoxin:

Please contact us for more information.

### Stability:

Samples are stable for up to twelve months from date of receipt at -70 °C

**Predicted N terminal:** Met

### Molecular Mass:

The recombinant human BCL2L11 consists of 130 amino acids and predicts a molecular mass of 15 KDa.

### Formulation:

Lyophilized from sterile 50mM Tris, 10% Glycerol, pH 8.0.

Normally 5 % - 8 % trehalose, mannitol and 0.01% Tween80 are added as protectants before lyophilization. Specific concentrations are included in the hardcopy of COA. Please contact us for any concerns or special requirements.

## Usage Guide

### Storage:

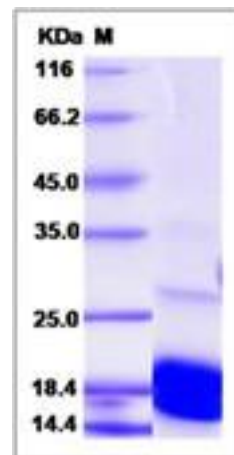
Store it under sterile conditions at -20°C to -80°C upon receiving. Recommend to aliquot the protein into smaller quantities for optimal storage.

**Avoid repeated freeze-thaw cycles.**

### Reconstitution:

Detailed reconstitution instructions are sent along with the products.

## SDS-PAGE:



## Protein Description

BCL2L11, also known as Bim, belongs to the BCL-2 protein family. Members of this family form hetero- or homodimers and act as anti- or pro-apoptotic regulators that are involved in a wide variety of cellular activities. BCL2L11 contains a Bcl-2 homology domain 3 (BH3). It has been shown to interact with other members of the BCL-2 protein family, including BCL2, BCL2L1/BCL-X(L), and MCL1, and to act as an apoptotic activator. BCL2L11 gene functions as an essential initiator of apoptosis in thymocyte-negative selection.

## References

1.Day Catherine L. et al., 2004, Biochem J. 377 (3): 597-605. 2.Murray S. et al., 2001, Cytogenet Cell Genet. 92 (3-4): 353. 3.Hsu SY. et al., 1998,Mol Endocrinol. 12 (9): 1432-40.

**Manufactured By Sino Biological Inc., FOR RESEARCH USE ONLY. NOT FOR USE IN HUMANS.**

**For US Customer:** Fax: 267-657-0217 • Tel: 215-583-7898

**Global Customer:** Fax :+86-10-5862-8288 • Tel:+86-400-890-9989 • <http://www.sinobiological.com>