

SAE1 Antibody, Rabbit PAb, Antigen Affinity Purified



Sino Biological
Biological Solution Specialist

Catalog Number: 13921-T52

GENERAL INFORMATION	
Immunogen:	Recombinant Human SAE1 protein (Catalog#13921-H20B)
Preparation	Produced in rabbits immunized with purified, recombinant Human SAE1 (rh SAE1; Catalog#13921-H20B; Q9UBE0; Met1-Lys346). SAE1 specific IgG was purified by Human SAE1 affinity chromatography.
Ig Type:	Rabbit IgG
Specificity:	Human SAE1
Formulation:	0.2 µm filtered solution in PBS
Storage:	This antibody can be stored at 2°C-8°C for one month without detectable loss of activity. Antibody products are stable for twelve months from date of receipt when stored at -20°C to -80°C. Preservative-Free. Sodium azide is recommended to avoid contamination (final concentration 0.05%-0.1%). It is toxic to cells and should be disposed of properly. Avoid repeated freeze-thaw cycles.
APPLICATIONS	
Applications:	WB,ELISA,IP
RECOMMENDED CONCENTRATION	
Western Blot	WB: 1:500-1:2000
Immunoprecipitation	IP: 0.5-2 µL/mg of lysate
ELISA	ELISA: 1:5000-1:10000 This antibody can be used at 1:5000-1:10000 with the appropriate secondary reagents to detect Human SAE1.

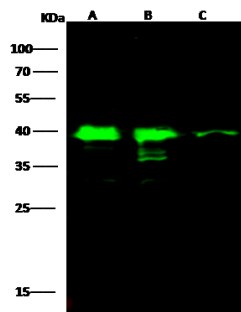
Please Note: Optimal concentrations/dilutions should be determined by the end user.

SAE1 Antibody, Rabbit PAb, Antigen Affinity Purified

Catalog Number: 13921-T52



Sino Biological
Biological Solution Specialist



Anti-SAE1 rabbit polyclonal antibody at 1:500 dilution

Lane A: Jurkat Whole Cell Lysate

Lane B: Hela Whole Cell Lysate

Lane C: A431 Whole Cell Lysate

Lysates/proteins at 30 µg per lane.

Secondary

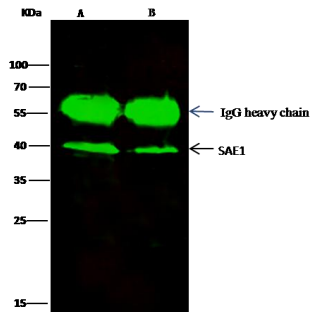
Goat Anti-Rabbit IgG H&L (Dylight800) at 1/10000 dilution.

Developed using the Odyssey technique.

Performed under reducing conditions.

Predicted band size: 38 kDa

Observed band size: 38 kDa



SAE1 was immunoprecipitated using:

Lane A: 0.5 mg Jurkat Whole Cell Lysate

Lane B: 0.5 mg A431 Whole Cell Lysate

2 µL anti-SAE1 rabbit polyclonal antibody and 15 µl of 50 % Protein G agarose.

Primary antibody:

Anti-SAE1 rabbit polyclonal antibody, at 1:200 dilution

Secondary antibody:

Dylight 800-labeled antibody to rabbit IgG (H+L), at 1:5000 dilution

Developed using the odssey technique.

Performed under reducing conditions.

Predicted band size: 38 kDa

Observed band size: 38 kDa