

MOB1B / MOBKL1A Antibody, Mouse MAb



Sino Biological
Biological Solution Specialist

Catalog Number: 14016-MM01

GENERAL INFORMATION

Immunogen:	Recombinant Human MOB1B / MOBKL1A Protein (Catalog#14016-H09E)
Preparation	This antibody was obtained from a mouse immunized with purified, recombinant Human MOB1B / MOBKL1A (rh MOB1B / MOBKL1A; Catalog#14016-H09E; Q7L9L4; Met1-Arg216). The IgG fraction of the cell culture supernatant was purified by Protein A affinity chromatography.
Ig Type:	Mouse IgG2a
Clone ID:	01
Specificity:	Human MOB1B / MOBKL1A
Formulation:	0.2 µm filtered solution in PBS
Storage:	This antibody can be stored at 2°C-8°C for one month without detectable loss of activity. Antibody products are stable for twelve months from date of receipt when stored at -20°C to -80°C. Preservative-Free. Avoid repeated freeze-thaw cycles.
Alternative Names:	MATS2,MOB4A,MOBKL1A

APPLICATIONS

Applications:	ICC/IF
---------------	--------

RECOMMENDED CONCENTRATION

ICC/IF	ICC/IF: 1:20-1:100
--------	--------------------

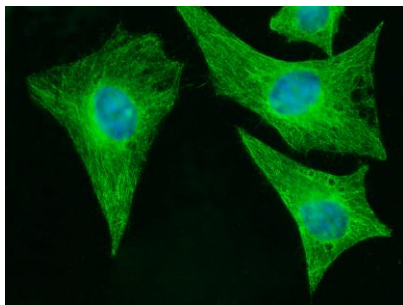
Please Note: Optimal concentrations/dilutions should be determined by the end user.

MOB1B / MOBKL1A Antibody, Mouse MAb



Sino Biological
Biological Solution Specialist

Catalog Number: 14016-MM01



Immunofluorescence staining of Human MOBKL1A in HeLa cells. Cells were fixed with 4% PFA, permeabilized with 0.3% Triton X-100 in PBS, blocked with 10% serum, and incubated with mouse anti-Human MOBKL1A monoclonal antibody (1:60) at 4°C overnight. Then cells were stained with the Alexa Fluor® 488-conjugated Goat Anti-mouse IgG secondary antibody(green) and counterstained with DAPI(blue). Positive staining was localized to cytoplasm.