

# CAPG / AFCP Antibody, Rabbit PAb, Antigen Affinity Purified



Sino Biological  
Biological Solution Specialist

Catalog Number: 14213-T52

## GENERAL INFORMATION

<b>Immunogen:</b>	Recombinant Human CAPG / AFCP protein (Catalog#14213-HNAE)
<b>Preparation</b>	Produced in rabbits immunized with purified, recombinant Human CAPG / AFCP (rh CAPG / AFCP; Catalog#14213-HNAE; AAH14549.1; Met1-Lys348). CAPG / AFCP specific IgG was purified by Human CAPG / AFCP affinity chromatography.
<b>Ig Type:</b>	Rabbit IgG
<b>Specificity:</b>	Human CAPG / AFCP
<b>Formulation:</b>	0.2 µm filtered solution in PBS
<b>Storage:</b>	This antibody can be stored at 2°C-8°C for one month without detectable loss of activity. Antibody products are stable for twelve months from date of receipt when stored at -20°C to -80°C. Preservative-Free. Sodium azide is recommended to avoid contamination (final concentration 0.05%-0.1%). It is toxic to cells and should be disposed of properly. Avoid repeated freeze-thaw cycles.

## APPLICATIONS

<b>Applications:</b>	WB,ELISA,IP
----------------------	-------------

## RECOMMENDED CONCENTRATION

<b>Western Blot</b>	WB: 1:500-1:2000
<b>Immunoprecipitation</b>	IP: 1-4 µL/mg of lysate
<b>ELISA</b>	ELISA: 1:5000-1:10000 This antibody can be used at 1:5000-1:10000 with the appropriate secondary reagents to detect Human CAPG / AFCP.

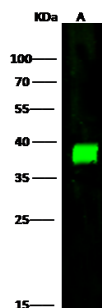
**Please Note: Optimal concentrations/dilutions should be determined by the end user.**

# CAPG / AFCP Antibody, Rabbit PAb, Antigen Affinity Purified



Sino Biological  
Biological Solution Specialist

Catalog Number: 14213-T52



Anti-CAPG rabbit polyclonal antibody at 1:500 dilution

Lane A: HeLa Whole Cell Lysate

Lysates/proteins at 30 µg per lane.

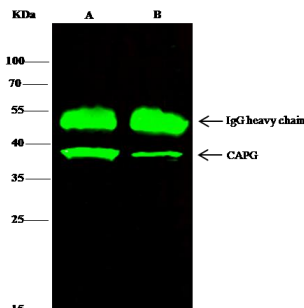
Secondary

Goat Anti-Rabbit IgG H&L (Dylight800) at 1/10000 dilution.

Developed using the Odyssey technique.  
Performed under reducing conditions.

Predicted band size: 38 kDa

Observed band size: 38 kDa



CAPG was immunoprecipitated using:

Lane A: 0.5 mg HeLa Whole Cell Lysate

Lane B: 0.5 mg HepG2 Whole Cell Lysate

2 µL anti-CAPG rabbit polyclonal antibody and 15 µL of 50 % Protein G agarose.

Primary antibody:

Anti-CAPG rabbit polyclonal antibody, at 1:330 dilution

Secondary antibody:

Dylight 800-labeled antibody to rabbit IgG (H+L), at 1:5000 dilution

Developed using the odssey technique.  
Performed under reducing conditions.

Predicted band size: 38 kDa

Observed band size: 38 kDa