

# CFL1 / cofilin Antibody, Rabbit PAb, Antigen Affinity Purified



Sino Biological  
Biological Solution Specialist

Catalog Number: 14544-T56

## GENERAL INFORMATION

<b>Immunogen:</b>	Recombinant Human CFL1 / cofilin Protein (Catalog#14544-H07E)
<b>Preparation</b>	Produced in rabbits immunized with purified, recombinant Human CFL1 / cofilin (rh CFL1 / cofilin; Catalog#14544-H07E; P23528; Met1-Leu166). CFL1 / cofilin specific IgG was purified by Human CFL1 / cofilin affinity chromatography.
<b>Ig Type:</b>	Rabbit IgG
<b>Specificity:</b>	Human CFL1 / cofilin
<b>Formulation:</b>	0.2 µm filtered solution in PBS
<b>Storage:</b>	This antibody can be stored at 2°C-8°C for one month without detectable loss of activity. Antibody products are stable for twelve months from date of receipt when stored at -20°C to -80°C. Preservative-Free. Sodium azide is recommended to avoid contamination (final concentration 0.05%-0.1%). It is toxic to cells and should be disposed of properly. Avoid repeated freeze-thaw cycles.

## APPLICATIONS

<b>Applications:</b>	WB,ELISA,IHC-P
----------------------	----------------

## RECOMMENDED CONCENTRATION

<b>IHC-P</b>	IHC-P: 1:10000-1:20000
<b>Western Blot</b>	WB: 1:500-1:2000
<b>ELISA</b>	ELISA: 1:5000-1:10000 This antibody can be used at 1:5000-1:10000 with the appropriate secondary reagents to detect Human CFL1 / cofilin.

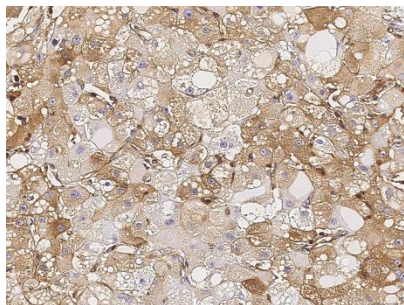
**Please Note: Optimal concentrations/dilutions should be determined by the end user.**

# CFL1 / cofilin Antibody, Rabbit PAb, Antigen Affinity Purified

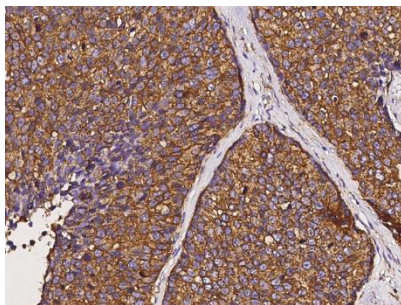
Catalog Number: 14544-T56



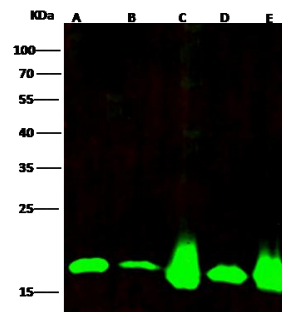
Sino Biological  
Biological Solution Specialist



Immunohistochemical staining of human CFL1 in human hepatoma with rabbit polyclonal antibody (1:20000, formalin-fixed paraffin embedded sections).



Immunohistochemical staining of human CFL1 in human breast carcinoma with rabbit polyclonal antibody (1:20000, formalin-fixed paraffin embedded sections).



Anti-CFL1 rabbit polyclonal antibody at 1:500 dilution

Lane A: Jurkat Whole Cell Lysate

Lane B: A431 Whole Cell Lysate

Lane C: MCF7 Whole Cell Lysate

Lysates/proteins at 30 µg per lane.

Secondary

Goat Anti-Rabbit IgG H&L (Dylight800) at 1/10000 dilution.

Developed using the Odyssey technique.  
Performed under reducing conditions.

Predicted band size: 19 kDa

Observed band size: 19 kDa