

Human CSTL1 / Cystatin-like 1 Protein (Fc Tag)

Catalog Number: 15857-H02H



Sino Biological
Biological Solution Specialist

General Information

Gene Name Synonym:

CTES1; dJ322G13.4; RCET11

Protein Construction:

A DNA sequence encoding the human CSTL1 (AAI17397.1) (Met1-Arg145) was expressed with the Fc region of human IgG1 at the C-terminus.

Source: Human

Expression Host: HEK293 Cells

QC Testing

Purity: > 95 % as determined by SDS-PAGE

Endotoxin:

< 1.0 EU per µg protein as determined by the LAL method.

Predicted N terminal: Ala 20

Molecular Mass:

The recombinant human CSTL1 consists 364 amino acids and predicts a molecular mass of 41.6 kDa.

Formulation:

Lyophilized from sterile PBS, pH 7.4.

Normally 5 % - 8 % trehalose, mannitol and 0.01% Tween80 are added as protectants before lyophilization. Specific concentrations are included in the hardcopy of COA. Please contact us for any concerns or special requirements.

Usage Guide

Stability & Storage:

Samples are stable for twelve months from date of receipt at -20°C to -80°C.

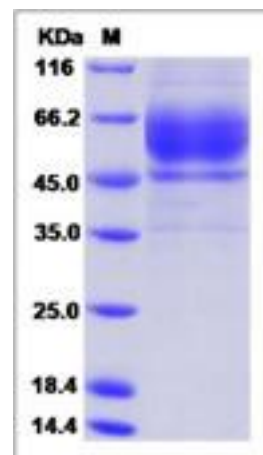
Store it under sterile conditions at -20°C to -80°C upon receiving. Recommend to aliquot the protein into smaller quantities for optimal storage.

Avoid repeated freeze-thaw cycles.

Reconstitution:

Detailed reconstitution instructions are sent along with the products.

SDS-PAGE:



For Research Use Only. Not for use in diagnostic or therapeutic procedures.

Tel: +86-400-890-9989 (Global), +1-215-583-7898 (USA), +49(0)6196 9678656 (Europe)

Website: <http://www.sinobiological.com>