

# Human IGFLR1 / TMEM149 Protein (Fc Tag)



Sino Biological  
Biological Solution Specialist

Catalog Number: 16098-H02H

## General Information

### Gene Name Synonym:

IGFLR1; TMEM149; U2AF1L4

### Protein Construction:

A DNA sequence encoding the human IGFLR1 (NP\_078936.1) (Met1-Pro159) was expressed with the Fc region of human IgG1 at the C-terminus.

**Source:** Human

**Expression Host:** HEK293 Cells

## QC Testing

**Purity:** > 95 % as determined by SDS-PAGE

### Endotoxin:

< 1.0 EU per µg of the protein as determined by the LAL method

**Predicted N terminal:** Ser 23

### Molecular Mass:

The recombinant human IGFLR1/Fc comprises 375 amino acids and has a predicted molecular mass of 41.4 kDa. The apparent molecular mass of the protein is approximately 58.9 and 47.6 kDa in SDS-PAGE under reducing conditions due to glycosylation.

### Formulation:

Lyophilized from sterile PBS, pH 7.4.

Normally 5 % - 8 % trehalose, mannitol and 0.01% Tween80 are added as protectants before lyophilization. Specific concentrations are included in the hardcopy of COA. Please contact us for any concerns or special requirements.

## Usage Guide

### Stability & Storage:

Samples are stable for twelve months from date of receipt at -20°C to -80°C.

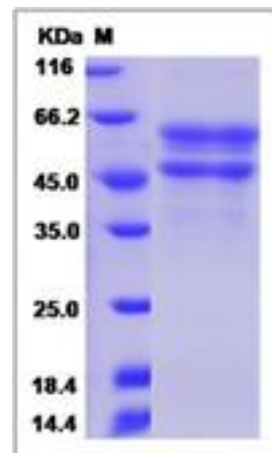
Store it under sterile conditions at -20°C to -80°C upon receiving. Recommend to aliquot the protein into smaller quantities for optimal storage.

**Avoid repeated freeze-thaw cycles.**

### Reconstitution:

Detailed reconstitution instructions are sent along with the products.

## SDS-PAGE:



**For Research Use Only. Not for use in diagnostic or therapeutic procedures.**

**Tel: +86-400-890-9989 (Global), +1-215-583-7898 (USA), +49(0)6196 9678656 (Europe)**

**Website: <http://www.sinobiological.com>**