

PPP2R2D Antibody, Rabbit PAb, Antigen Affinity Purified



Sino Biological
Biological Solution Specialist

Catalog Number: 202032-T08

GENERAL INFORMATION

Immunogen:	E. coli-derived Human PPP2R2D fragment
Preparation	Produced in rabbits immunized with E. coli-derived Human PPP2R2D fragment, and purified by antigen affinity chromatography.
Ig Type:	Rabbit IgG
Specificity:	Human PPP2R2D
Formulation:	PBS, pH7.0 with 0.03% Proclin300
Storage:	This antibody can be stored at 2°C-8°C for one month without detectable loss of activity. Antibody products are stable for twelve months from date of receipt when stored at -20°C to -80°C. Avoid repeated freeze-thaw cycles.
Alternative Names:	PPP2R2D

APPLICATIONS

Applications:	IHC-P
---------------	-------

RECOMMENDED CONCENTRATION

IHC-P	IHC-P: 1:50-1:200
-------	-------------------

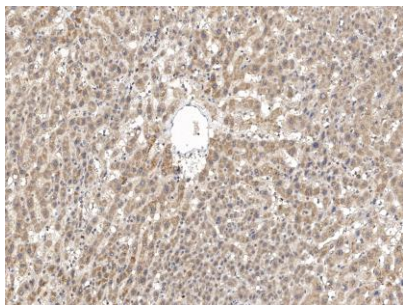
Please Note: Optimal concentrations/dilutions should be determined by the end user.

PPP2R2D Antibody, Rabbit PAb, Antigen Affinity Purified

Catalog Number: 202032-T08



Sino Biological
Biological Solution Specialist



Immunohistochemical staining of human PPP2R2D in human liver with rabbit polyclonal antibody at 1:100 dilution, formalin-fixed paraffin embedded sections.