

**Ebola virus EBOV (subtype Zaire, strain H.sapiens-wt / GIN / 2014 / Kissidougou-C15)
Matrix protein VP40 Antibody, Rabbit PAb,
Antigen Affinity Purified**

Catalog Number: 40446-T62



Sino Biological
Biological Solution Specialist

GENERAL INFORMATION	
Immunogen:	Recombinant Ebola virus EBOV (subtype Zaire, strain H.sapiens-wt/GIN/2014/Kissidougou-C15) Matrix protein VP40 Protein (Catalog#40446-V07E)
Preparation	Produced in rabbits immunized with purified, recombinant EBOV Ebola virus EBOV (subtype Zaire, strain H.sapiens-wt / GIN / 2014 / Kissidougou-C15) Matrix protein VP40 (Catalog#40446-V07E; AHX24648.1; Asn31-Lys326), and purified by antigen affinity chromatography.
Ig Type:	Rabbit IgG
Specificity:	Ebola virus EBOV (subtype Zaire, strain H.sapiens-wt / GIN / 2014 / Kissidougou-C15) Matrix protein VP40
Formulation:	0.2 µm filtered solution in PBS
Storage:	This antibody can be stored at 2°C-8°C for one month without detectable loss of activity. Antibody products are stable for twelve months from date of receipt when stored at -20°C to -80°C. Preservative-Free. Sodium azide is recommended to avoid contamination (final concentration 0.05%-0.1%). It is toxic to cells and should be disposed of properly. Avoid repeated freeze-thaw cycles.
APPLICATIONS	
Applications:	WB, ELISA
	IHC, FCM, IF, IP et al. applications haven't been validated. (Antibody's applications haven't been validated with corresponding virus positive samples. Optimal concentrations/dilutions should be determined by the end user.)
RECOMMENDED CONCENTRATION	
Western Blot	WB: 1:1000-1:5000
ELISA	ELISA: 1:5000-1:10000 This antibody can be used at 1:5000-1:10000 with the appropriate secondary reagents to detect Ebola virus EBOV (subtype Zaire, strain H.sapiens-wt / GIN / 2014 / Kissidougou-C15) Matrix protein VP40.

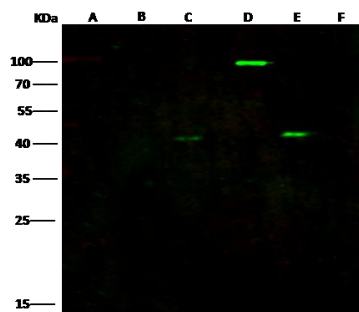
Please Note: Optimal concentrations/dilutions should be determined by the end user.

Ebola virus EBOV (subtype Zaire, strain H.sapiens-wt / GIN / 2014 / Kissidougou-C15) Matrix protein VP40 Antibody, Rabbit PAb, Antigen Affinity Purified

Catalog Number: 40446-T62



Sino Biological
Biological Solution Specialist



Anti-Ebola virus EBOV (subtype Zaire, strain H.sapiens-wt/GIN/2014/Kissidougou-C15) Matrix protein VP40 rabbit polyclonal antibody at 1:5000 dilution

Lane A: Ebola virus EBOV (subtype Sudan, strain Gulu) VP40 / Matrix protein VP40 Protein (10ng)

Lane B: Ebola virus EBOV (subtype Sudan, strain Gulu) VP40 / Matrix protein VP40 Protein (10ng)

Lane C: Ebola virus EBOV (subtype Bundibugyo, strain Uganda 2007) VP40 (10ng)

Lane D: Ebola virus EBOV (subtype Zaire, strain H.sapiens-wt/GIN/2014/Kissidougou-C15) VP40 (10ng)

Lane E: Ebola virus EBOV (subtype Zaire, strain H.sapiens-wt/GIN/2014/Kissidougou-C15) Matrix protein VP40 Protein(10ng)

Lane F: Human CLIC1(10ng)

Secondary

DyLight 800-labeled Antibody To Rabbit IgG (H+L) at 1:5000 dilution.

Developed using the Odyssey technique.

Performed under reducing conditions.