

# LIMP-2 / SCARB2 / CD36L2 Antibody (FITC), Rabbit MAb



Sino Biological  
Biological Solution Specialist

Catalog Number: 50052-R052-F

EliteRmab® is a registered trademark of Sino Biological Inc.

## GENERAL INFORMATION

|                           |   |
|---------------------------|---|
| <b>Immunogen:</b>         | Recombinant Mouse LIMP-2 / SCARB2 / CD36L2 protein (Catalog#50052-M08H)   |
| <b>Reagents:</b>          | FITC-conjugated Rabbit monoclonal antibody  |
| <b>Preparation</b>        | This antibody was obtained from a rabbit immunized with purified, recombinant Mouse LIMP-2 / SCARB2 / CD36L2 (rM LIMP-2 / SCARB2 / CD36L2; Catalog#50052-M08H; NP_031670.1; Met1-Thr432) and conjugated with FITC under optimum conditions, the unreacted FITC was removed. |
| <b>Ig Type:</b>           | Rabbit IgG  |
| <b>Clone ID:</b>          | 052   |
| <b>Specificity:</b>       | Mouse LIMP-2 / SCARB2 / CD36L2  |
| <b>Concentration:</b>     | 10 µl/Test, 0.1 mg/ml   |
| <b>Formulation:</b>       | PBS solution containing 0.5% BSA and 0.03%ProClin300  |
| <b>Storage:</b>           | This antibody can be stored at 2℃-8℃ for twelve months without detectable loss of activity. Protected from prolonged exposure to light. Do not freeze !   |
| <b>Alternative Names:</b> | SCARB2  |

## APPLICATIONS

|                      |     |
|----------------------|-----|
| <b>Applications:</b> | FCM |
|----------------------|-----|

## RECOMMENDED CONCENTRATION

*Please Note: Optimal concentrations/dilutions should be determined by the end user.*

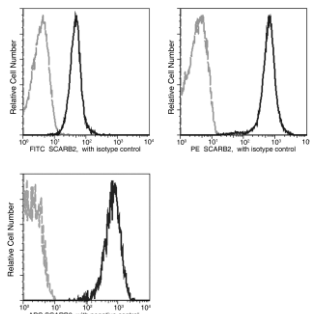
# LIMP-2 / SCARB2 / CD36L2 Antibody (FITC), Rabbit MAb

Catalog Number: 50052-R052-F



Sino Biological  
Biological Solution Specialist

EliteRmab® is a registered trademark of Sino Biological Inc.



Flow cytometric analysis of Mouse SCARB2 expression in spleen lymphocytes. The cells were treated according to manufacturer's manual (BD Pharmingen™ Cat. No. 554714), and then stained with FITC Rabbit anti-Mouse SCARB2. The fluorescence histograms were derived from gated events with the forward and side light-scatter characteristics of intact cells.

Flow cytometry was performed on a BD FACSCalibur flow cytometry system. Please refer to [www.sinobiological.com/Flow-Cytometry-FACS-Protocols-a-750.html](http://www.sinobiological.com/Flow-Cytometry-FACS-Protocols-a-750.html) for technical protocols.